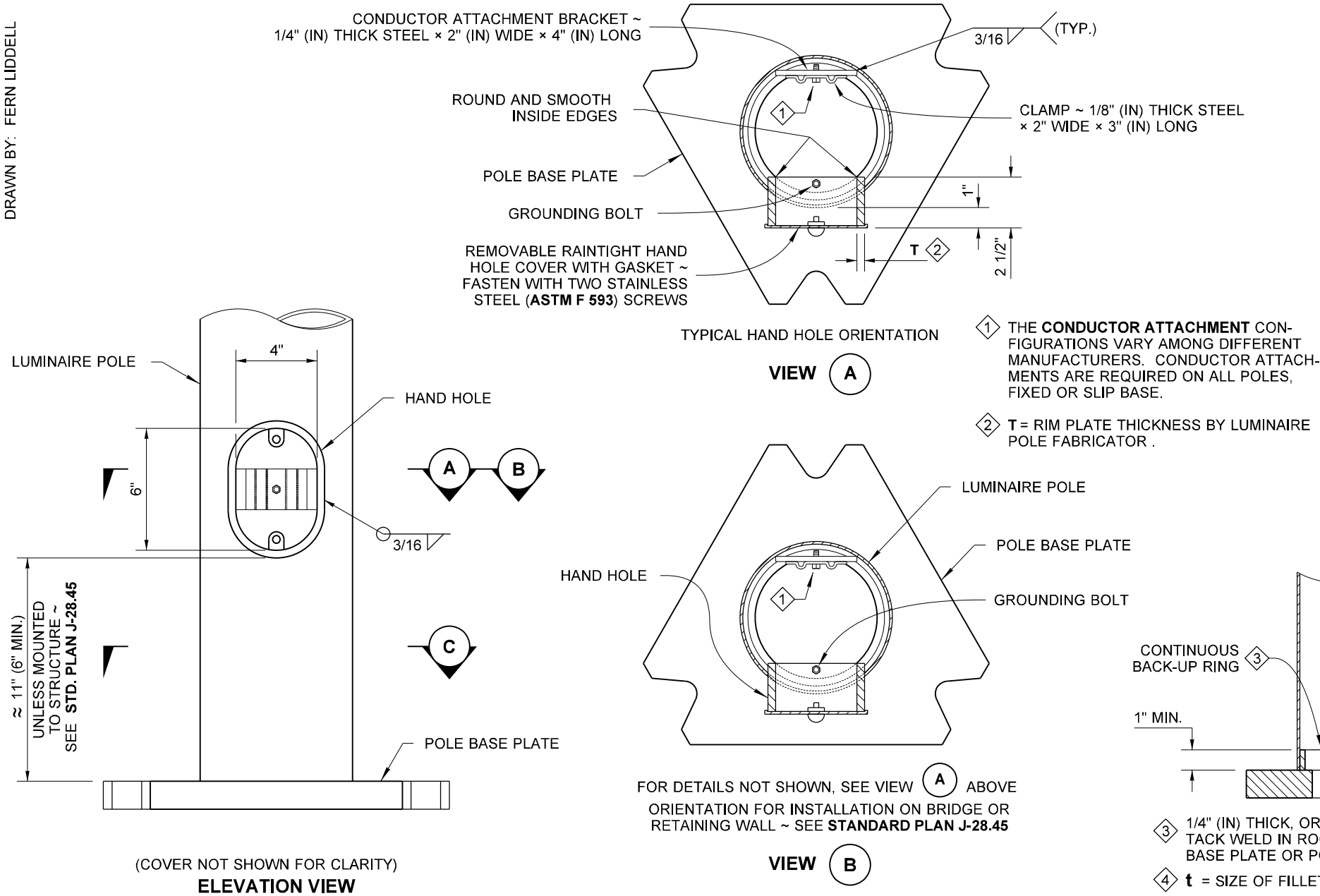


DRAWN BY: FERN LIDDELL

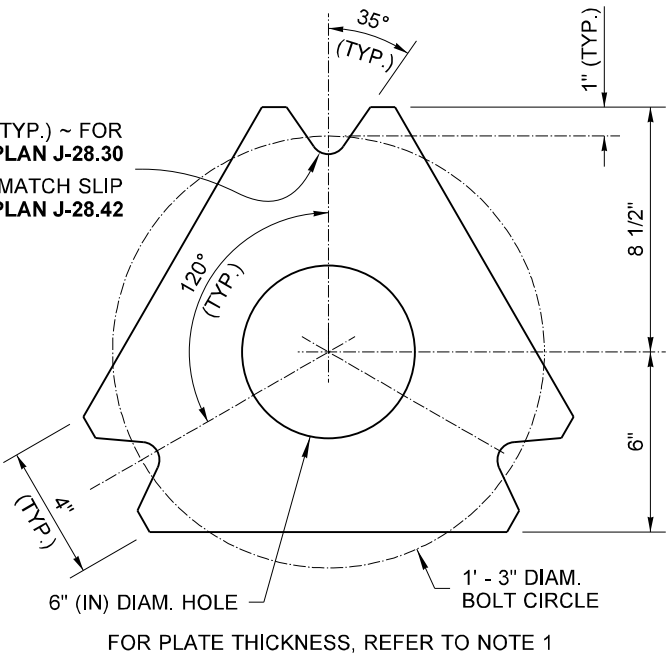
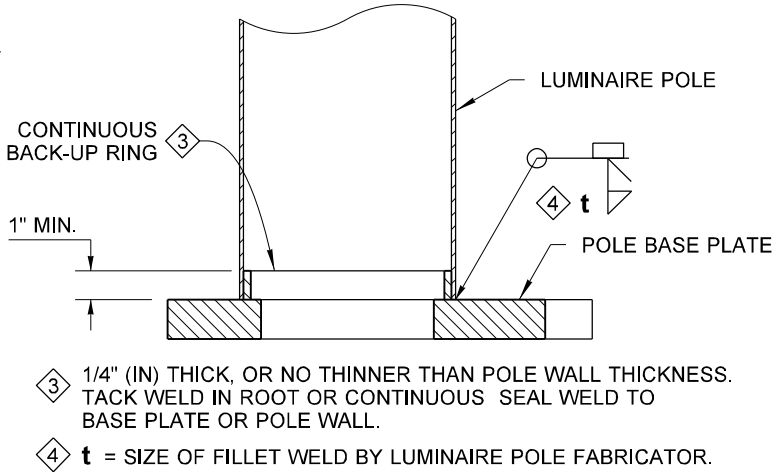


NOTES

1. Pole Base Plate for a Slip Base design shall be 1 1/4" (in) steel manufactured from **ASTM A572 GR.50** or **ASTM A588**. Pole Base Plate for a Fixed Base design shall be either 1 1/4" (in) steel manufactured from **ASTM A572 GR. 50, ASTM A588**, or 1 1/2" (in) manufactured from **ASTM A36**. All Pole Base Plate notched surfaces shall be finished smooth.
2. Round and smooth all edges along wire-way to protect conductors. See **Standard Plan J-28.70** for wiring details.
3. Galvanizing shall be in accordance with **AASHTO M 111**.
4. See **Standard Plans C-8b, C-85.14**, and **J-28.60** for foundation and base plate requirements when steel light standards are mounted on concrete traffic barrier.
5. See **Standard Plan J-28.42** for details when Slip Base is required.

FIXED BASE: RADIUS = (D/2+1/16") (TYP.) ~ FOR "D," SEE TABLE ON **STANDARD PLAN J-28.30**

SLIP BASE: RADIUS = 9/16" (TYP.) ~ MATCH SLIP PLATE, **STANDARD PLAN J-28.42**



TOP VIEW
POLE BASE PLATE DETAIL



Zeldenrust, Richard
Jul 20 2016 8:29 AM

**STEEL LIGHT STANDARD
POLE BASE AND
HAND HOLE DETAILS
STANDARD PLAN J-28.50-03**

SHEET 1 OF 1 SHEET

APPROVED FOR PUBLICATION

Carpenter, Jeff
Carpenter, Jeff
Jul 21 2016 8:29 AM

STATE DESIGN ENGINEER

Washington State Department of Transportation