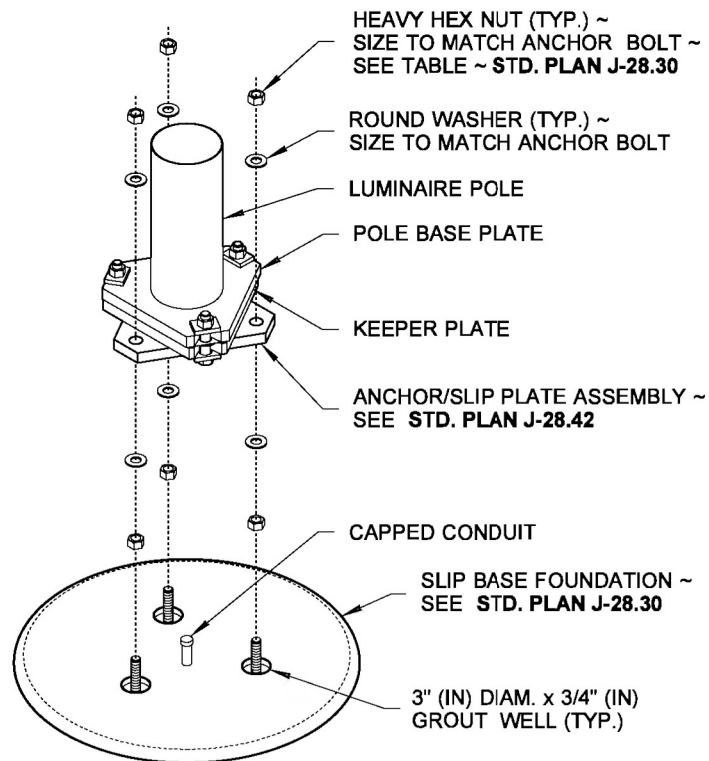


DRAWN BY: FERN LIDDELL



EXPLODED VIEW

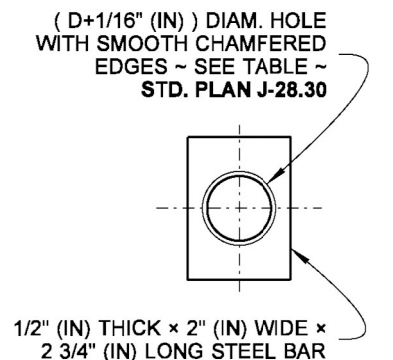
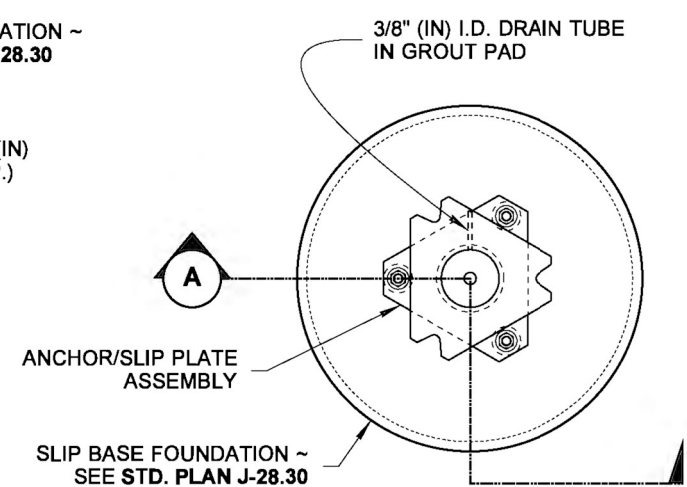
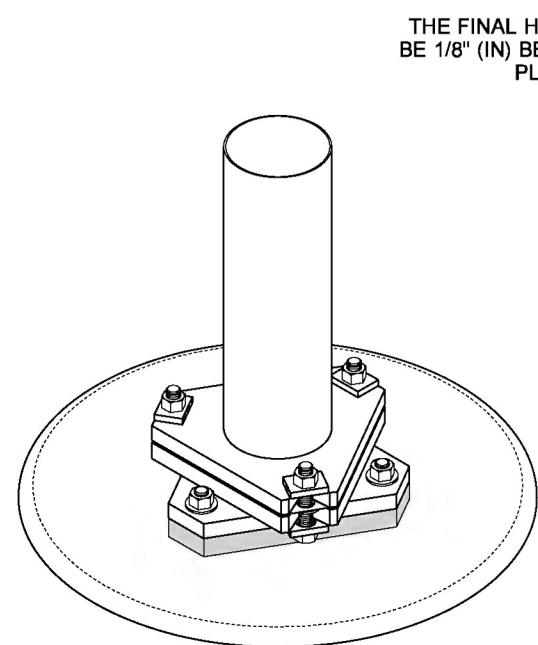


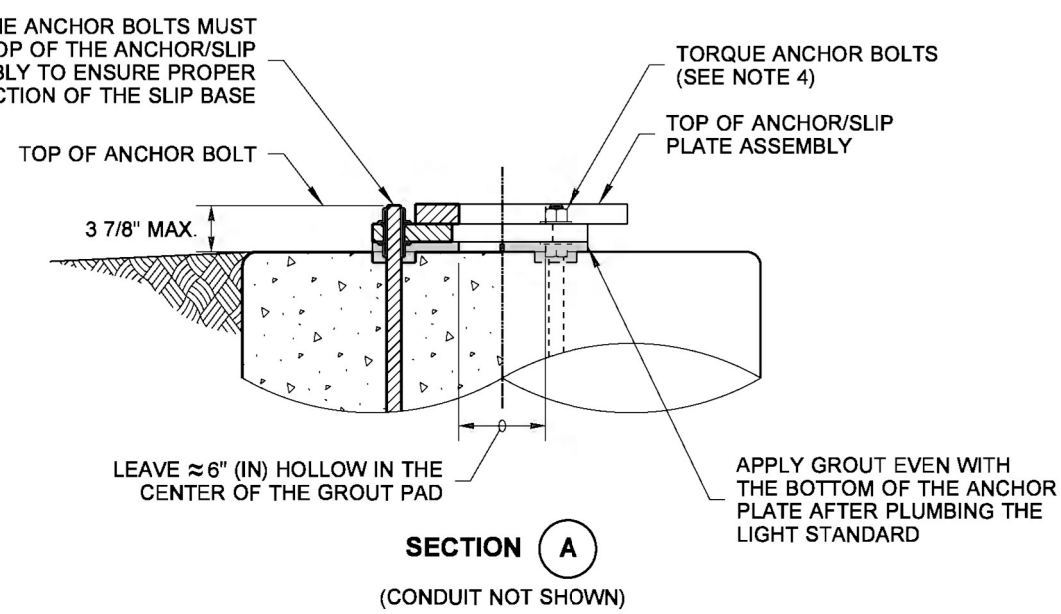
PLATE WASHER DETAIL



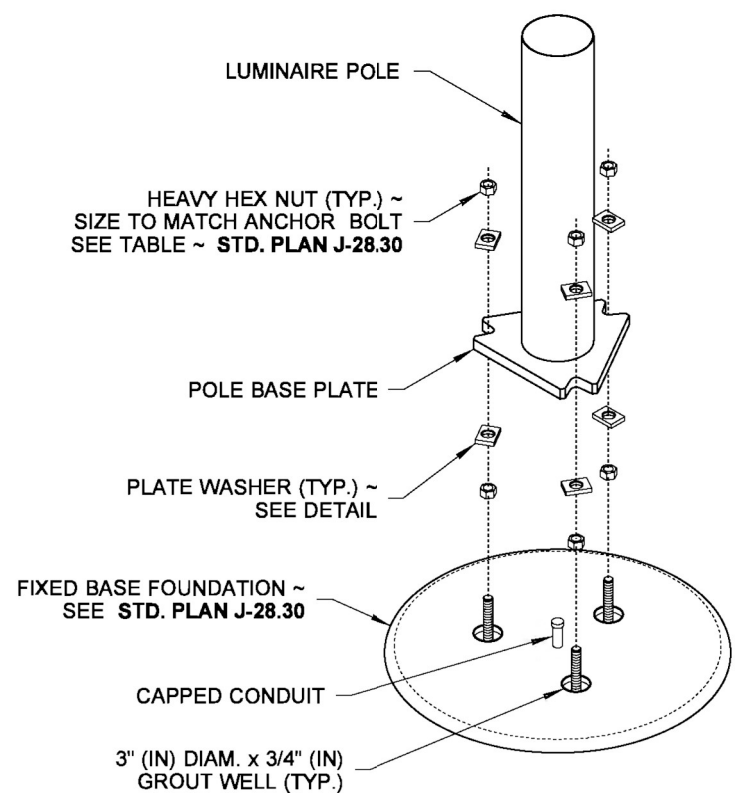
PLAN VIEW
SLIP BASE



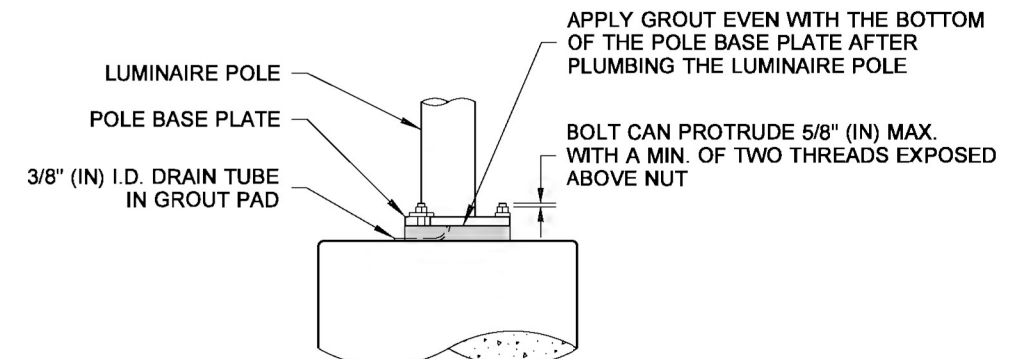
ASSEMBLED
ISOMETRIC VIEW
SLIP BASE



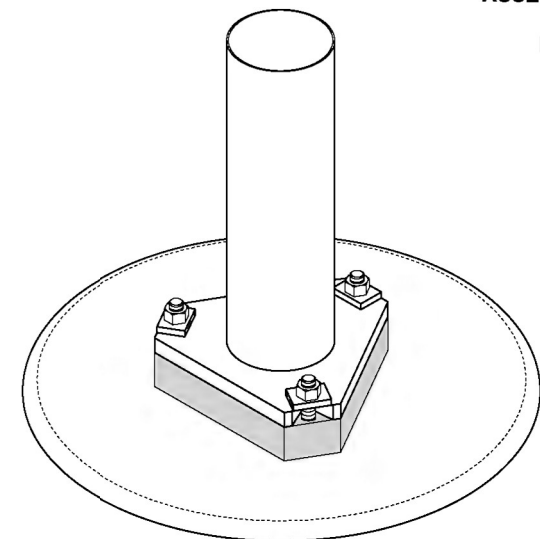
SECTION A
(CONDUIT NOT SHOWN)



EXPLODED VIEW



ASSEMBLED AND GROUTED
ELEVATION VIEW
FIXED BASE



ASSEMBLED
ISOMETRIC VIEW
FIXED BASE

NOTES

1. 50' (ft) (H1) poles with double mast arms or poles weighing in excess of 1000 LBS shall not be installed on a slip base.
2. Galvanizing shall be in accordance with AASHTO M 111.
3. See **Standard Plans C-8b, C-85.15, and J-28.60** for foundation and base plate requirements when light standards are mounted on cement concrete traffic barrier.
4. See **Standard Specification Sections 6-03.3(33) and 8-20.3 (4)** for the torque requirements for all of the anchor bolt installations. Install 1" (in) diameter clamping bolts in all slip bases to a torque of 95 Foot-Pounds - See **Standard Specification Section 8-20.3 (13)A. DO NOT OVERTIGHTEN.** After state inspection, burr threads to prevent nut rotation.
5. For anchor bolt Diameter " D ", see table, **Standard Plan J-28.30.**



Richard P. Zeldenrust Zeldenrust, Richard
Jun 10 2014 10:39 AM

**STEEL LIGHT STANDARD
BASE MOUNTING**

STANDARD PLAN J-28.40-02

SHEET 1 OF 1 SHEET

APPROVED FOR PUBLICATION
Pasco Byrd Pasco, Pasco
Jun 11 2014 1:33 PM
STATE DESIGN ENGINEER
Washington State Department of Transportation