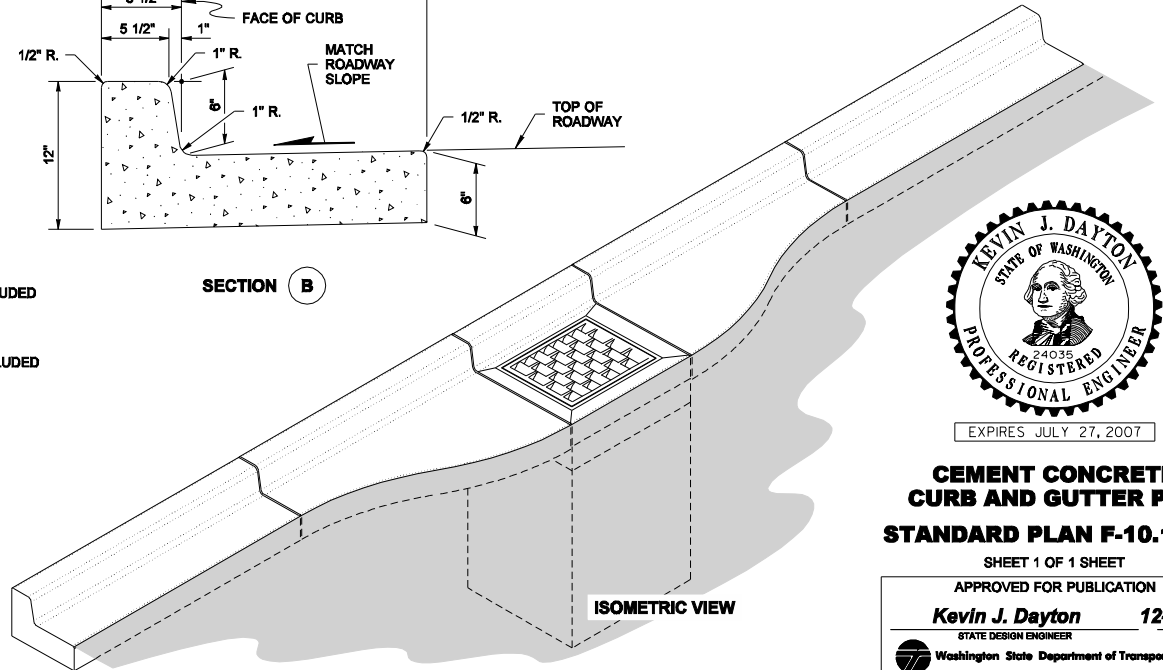
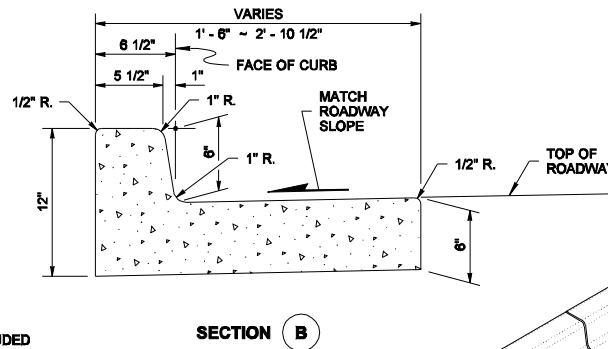
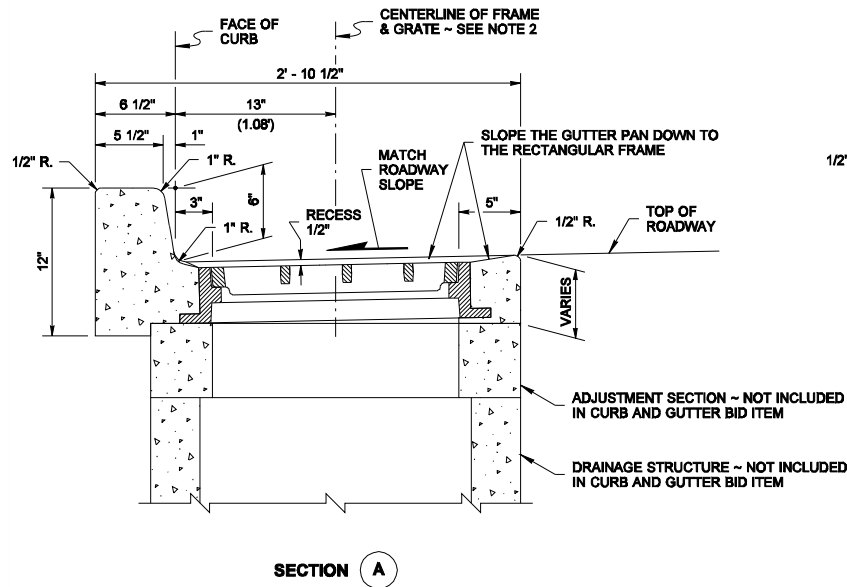


CATCH BASIN GUTTER PAN

NOTES

1. The intent of this design is to facilitate the compaction of Hot Mix Asphalt pavement adjacent to a drainage structure.
2. The centerline of the drainage structure may differ from the centerline of the frame and grate.



EXPIRES JULY 27, 2007

NOTE: THIS PLAN IS NOT A LEGAL ENGINEERING DOCUMENT. IT IS AN ELECTRONIC DOCUMENT. THE ORIGINAL, SIGNED BY ME, MUST BE FILED WITH THE WASHINGTON STATE DEPARTMENT OF TRANSPORTATION. A COPY MAY BE OBTAINED UPON REQUEST.

CEMENT CONCRETE CURB AND GUTTER PAN
STANDARD PLAN F-10.16-00

SHEET 1 OF 1 SHEET

APPROVED FOR PUBLICATION

Kevin J. Dayton 12-20-06

STATE DESIGN ENGINEER DATE
 Washington State Department of Transportation

SUPPLEMENTAL TO STANDARD PLAN
F-10.16-00

Modify the Standard Plan as follows:

Notes:

1. Construct a 6" thick layer of compacted CSTC under all curbs and gutters.
2. Delete reference to premolded joint filler and expansion joints in the Standard Plan. Where premolded joint filler or expansion joints are shown on the Standard Plan, construct a contraction joint, except where the new concrete abuts existing concrete, construct a construction joint.
3. Catch basin and grate type shall be as shown in the project specific plans and special provisions.