

Technical drawing of a mechanical part, likely a bracket or support, showing dimensions in inches. The drawing includes a top view and a side view.

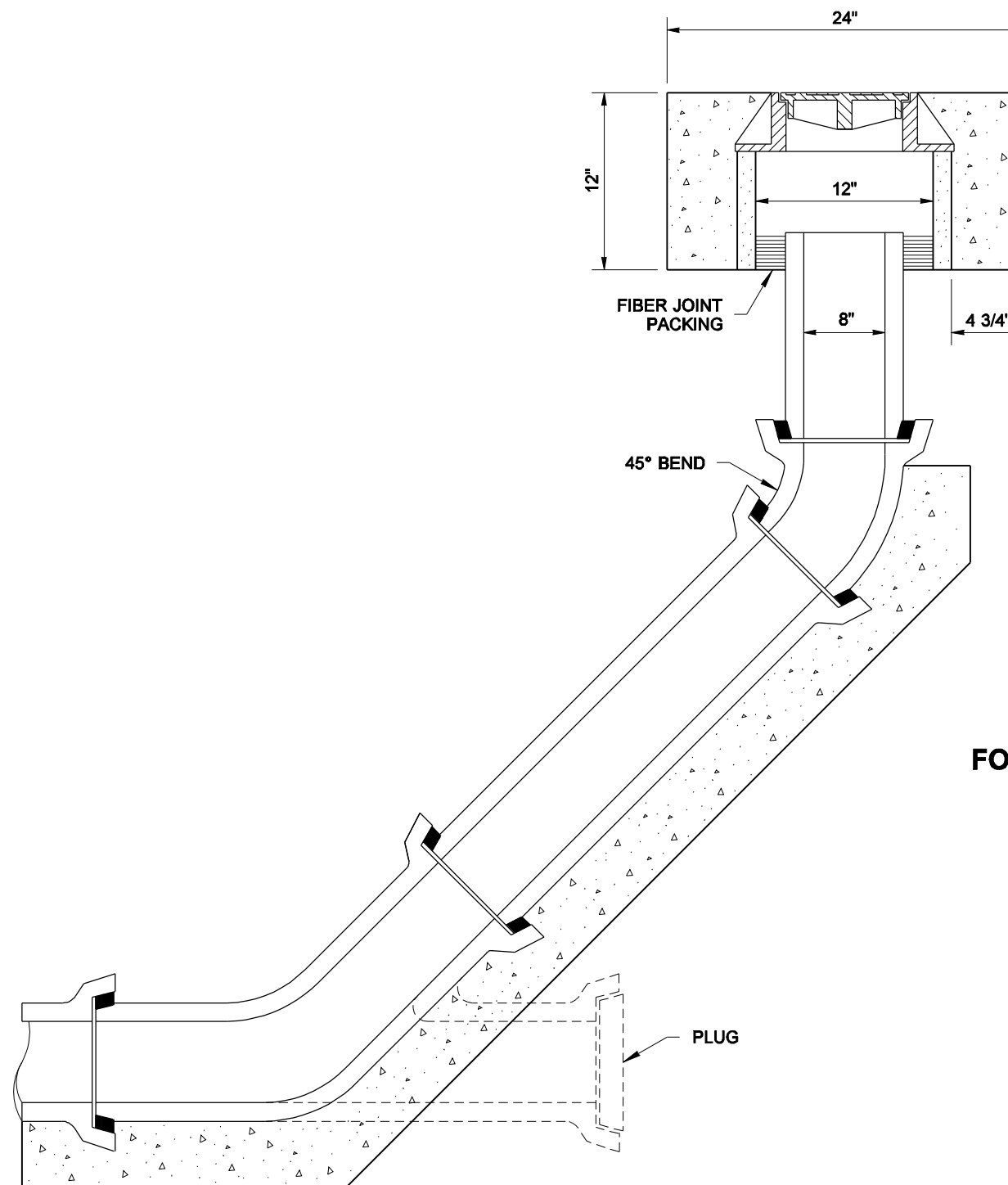
Top View Dimensions:

- Overall width: 10"
- Inner width: 9"
- Distance from left edge to first vertical step: 8 3/4"
- Distance from left edge to second vertical step: 7"
- Distance from left edge to third vertical step: 7 3/4"
- Distance from left edge to right edge: 15"

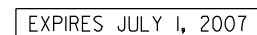
Side View Dimensions:

- Overall height: 4"
- Height of the top flange: 5/8"
- Height of the first vertical step: 1/2"
- Height of the second vertical step: 2"
- Height of the third vertical step: 1 1/4"
- Height of the base: 1 1/2"

CAST IRON RING AND COVER



FOR SANITARY SEWER USE



8 INCH SEWER CLEAN-OUT

STANDARD PLAN B-85.40-00

SHEET 1 OF 1 SHEET

APPROVED FOR PUBLICATION

Harold J. Peterfeso

06-08-06

STATE DESIGN ENGINEER

DATE _____

 **Washington State Department of Transportation**

SUPPLEMENTAL TO STANDARD PLAN

B-85.40-00

Modify the Standard Plan as follows:

Notes:

1. The straight pipe section connected to the wye and the 45 deg bend may be interchanged in location as needed.
2. Tracer wire shall be installed along the top of all pipe entering the structure, then up the wall and attached with a 3' long coil of slack at the top inside of the structure.