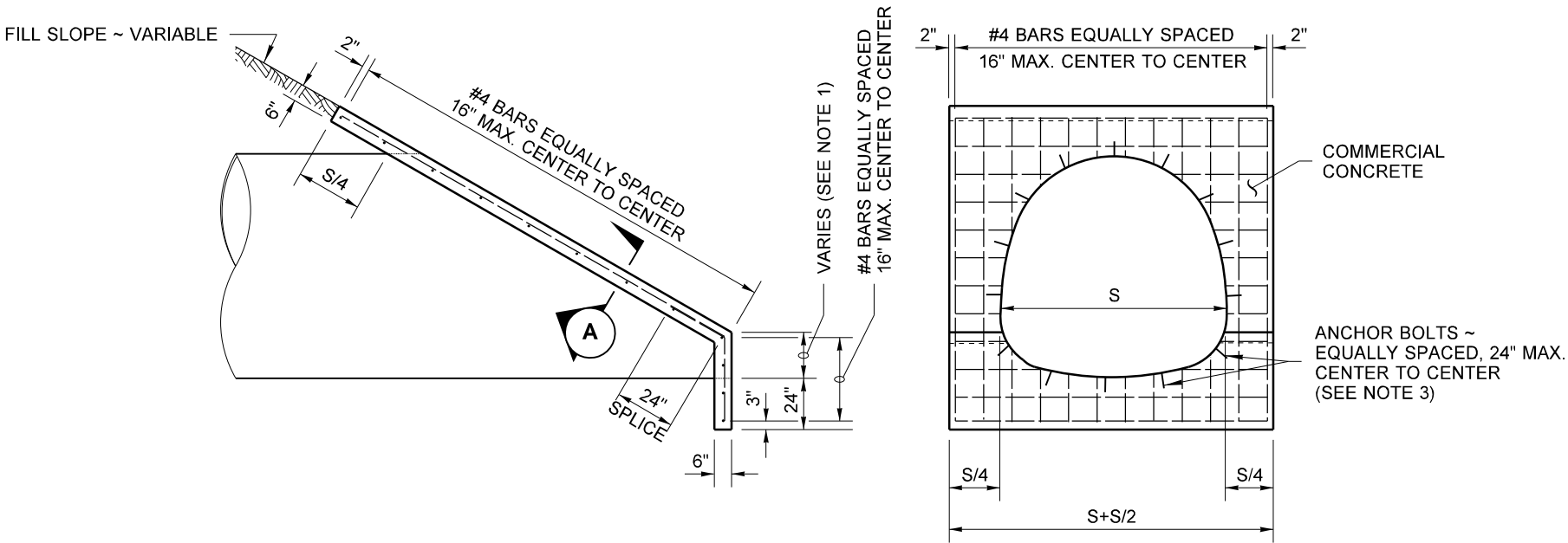
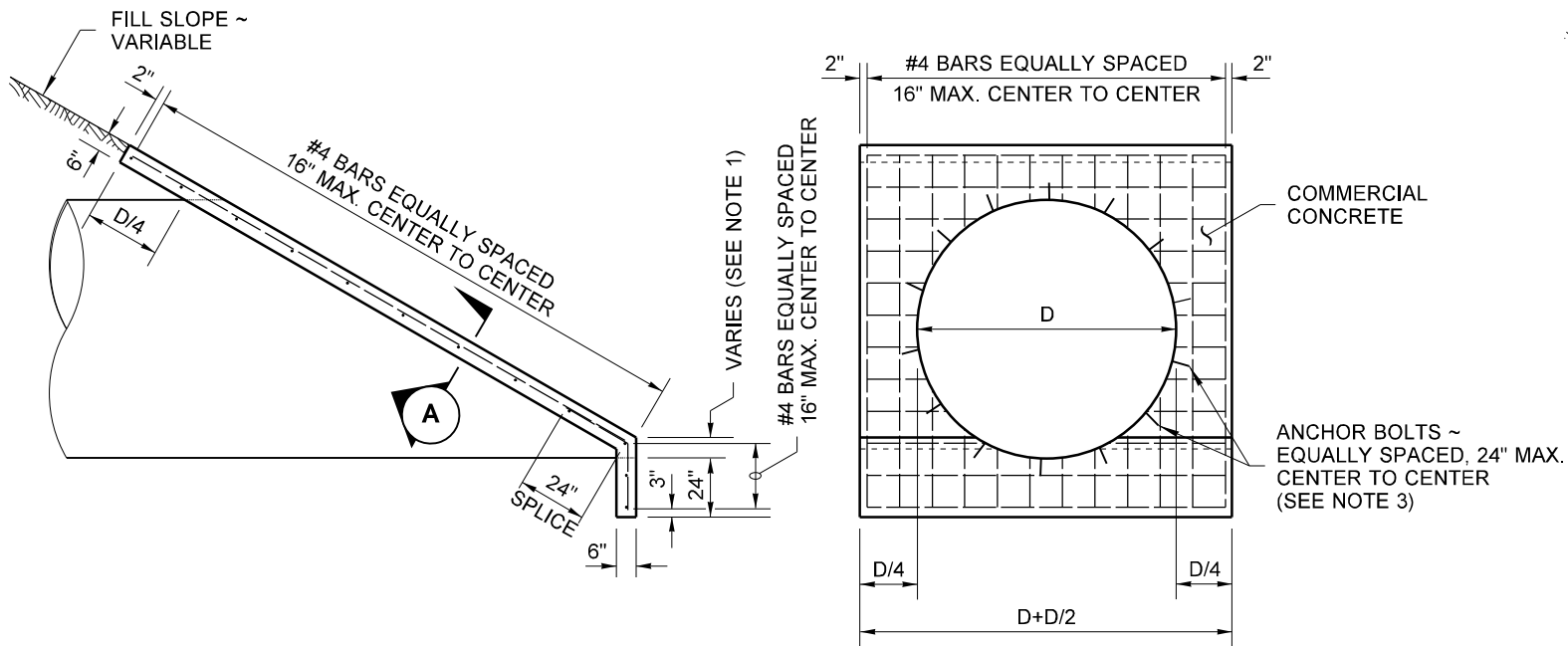


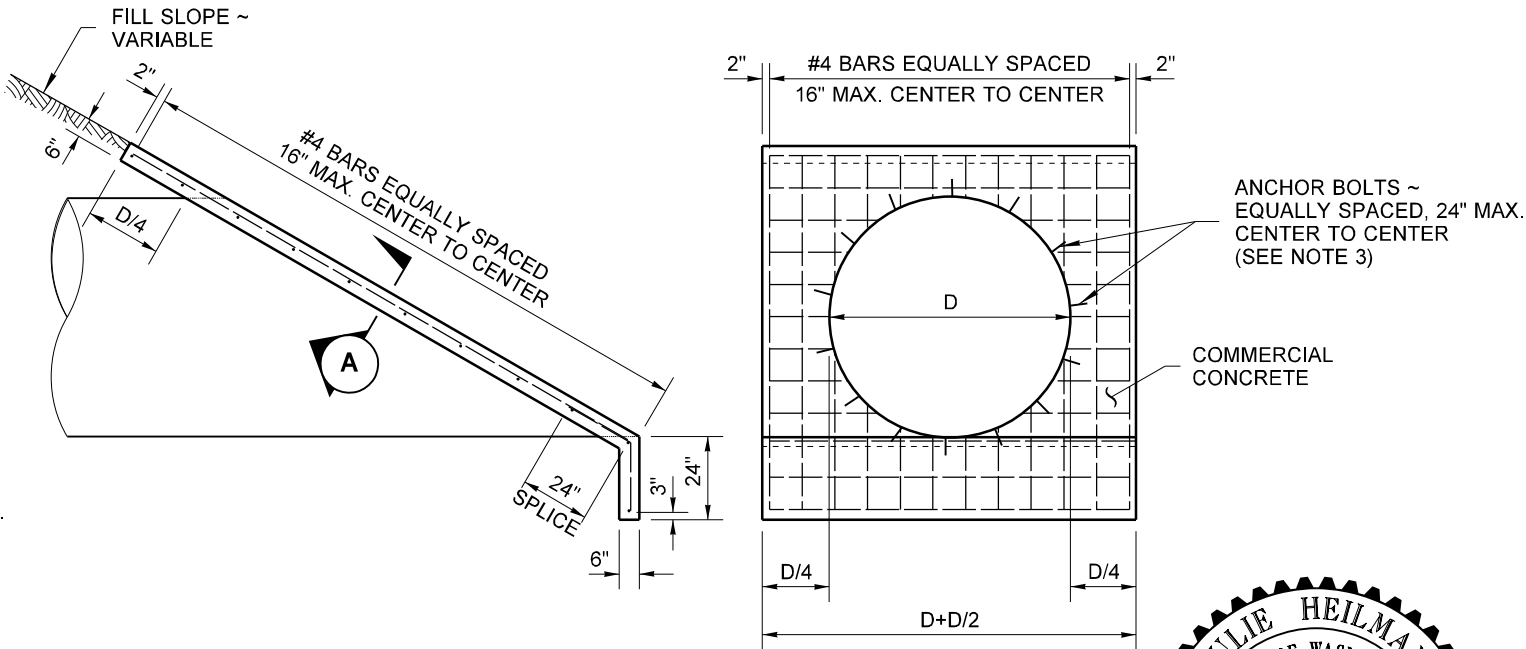
DRAWN BY: LISA CYFORD



STRUCTURAL PLATE PIPE ARCHES AND UNDERPASSES

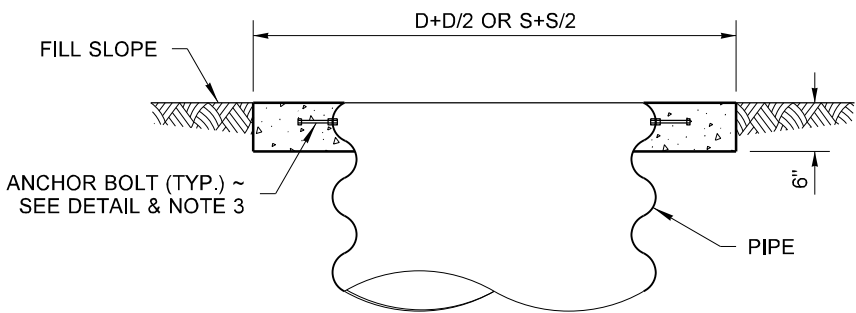


STEP MITERED PIPE

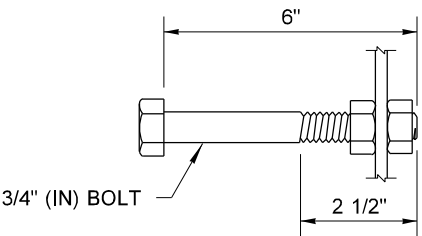


FULL MITERED PIPE

PIPES AND STRUCTURAL PLATE PIPES



SECTION A



ANCHOR BOLT DETAIL
SEE STANDARD SPECIFICATION SECTION 9-06.5(1)

NOTES

1. The variable dimension indicated for the height of step for step mitered pipes shall conform to the manufacturers recommendations unless specified differently on the plans or in the Special Provisions.
2. Reinforcing steel shall have 1 1/2" (in) min. clear cover to all concrete surfaces.
3. Headwalls for concrete culvert pipe may omit anchor bolt attachment.
4. When steel pipe safety bars ar used, headwall thickness shall be increased to 8" (in).



Julie Heilman
Heilman, Julie
Feb 20 2018 12:57 PM

HEADWALLS FOR CULVERT PIPE AND UNDERPASS

STANDARD PLAN B-75.20-02

SHEET 1 OF 1 SHEET

APPROVED FOR PUBLICATION

Carpenter, Jeff
Feb 27 2018 8:03 AM

STATE DESIGN ENGINEER

Washington State Department of Transportation