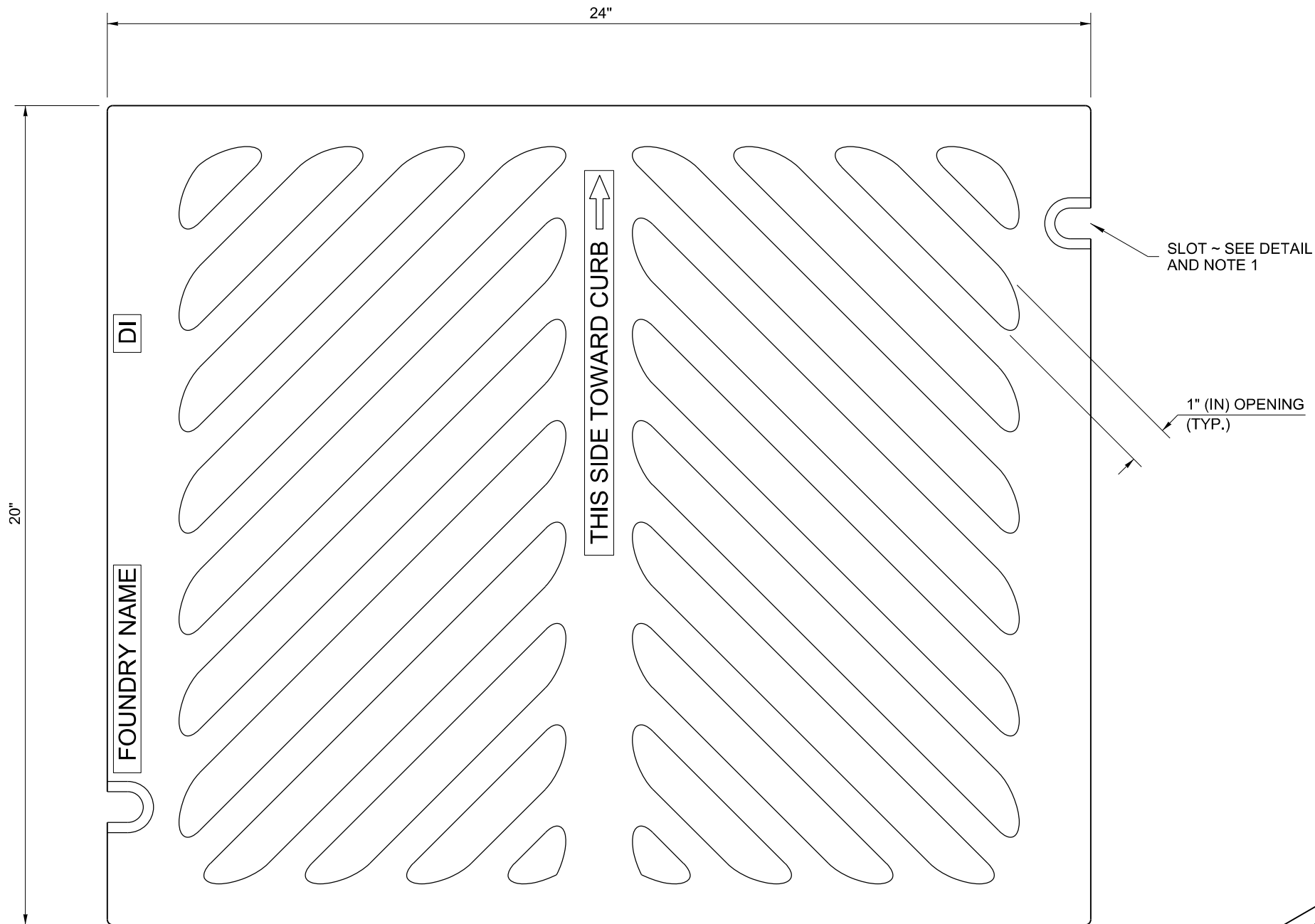
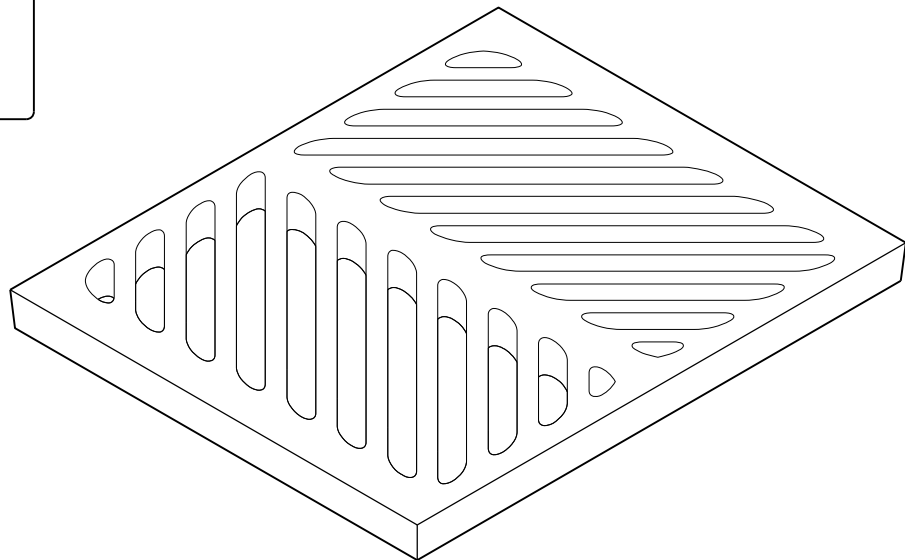


DRAWN BY: FERN LIDDELL



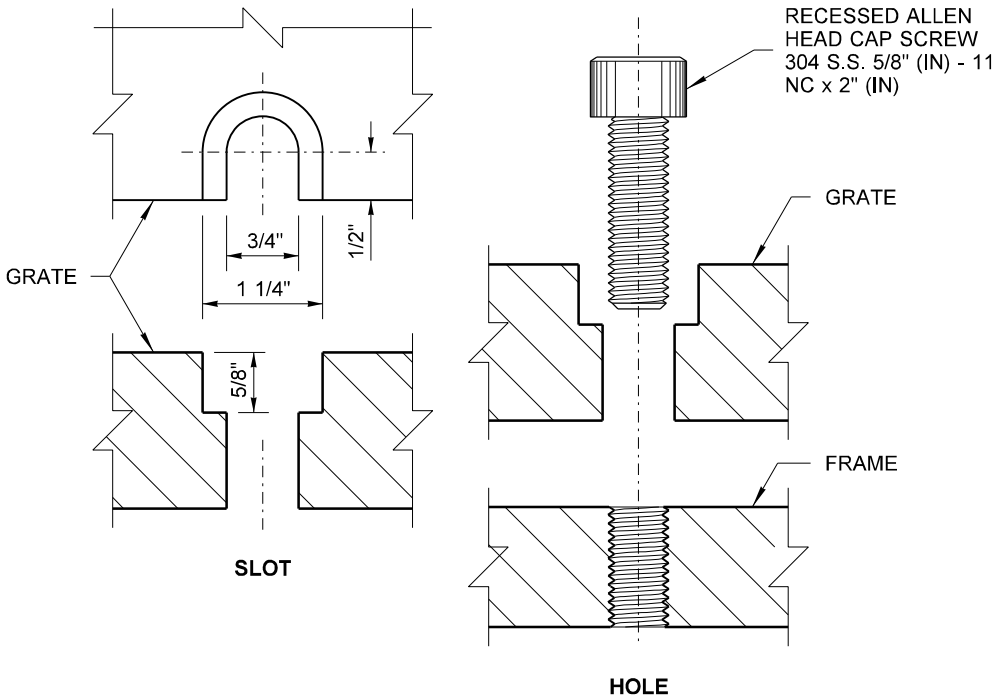
TOP



ISOMETRIC

NOTES

1. Bolt-down capability is required on all frames, grates, and covers, unless specified otherwise in the Contract. Provide 2 holes in the frame that are vertically aligned with the grate or cover slots. The frame shall accept the 304 Stainless Steel (S.S.) 5/8" (in) - 11 NC x 2" (in) allen head cap screw by being tapped, or other approved mechanism. Location of bolt-down holes varies by manufacturer.
2. Refer to **Standard Specification section 9-05.15**, and **9-05.15(2)** for additional requirements.
3. For frame details, see **Standard Plan B-30.10**.
4. The thickness of the grate shall not exceed 1 5/8" (in).



BOLT-DOWN DETAILS
SEE NOTE 1



Heilman, Julie
Feb 20 2018 12:55 PM

**RECTANGULAR
HERRINGBONE GRATE**
STANDARD PLAN B-30.50-03

SHEET 1 OF 1 SHEET

APPROVED FOR PUBLICATION
Carpenter, Jeff
Feb 27 2018 7:59 AM

STATE DESIGN ENGINEER
Washington State Department of Transportation