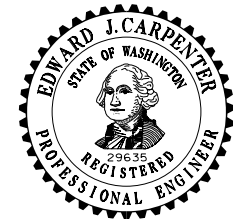
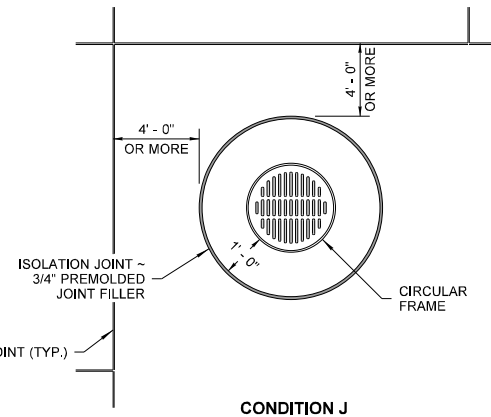
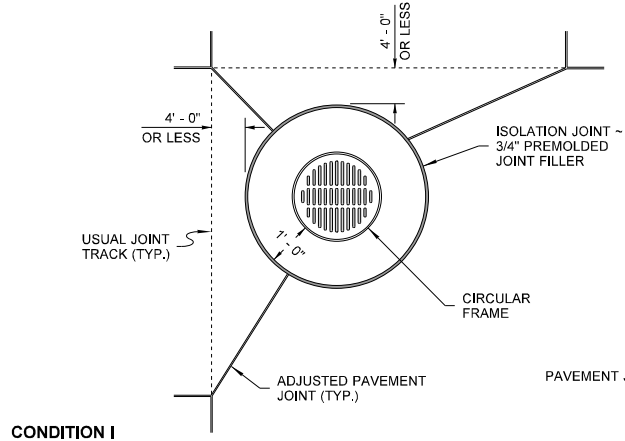
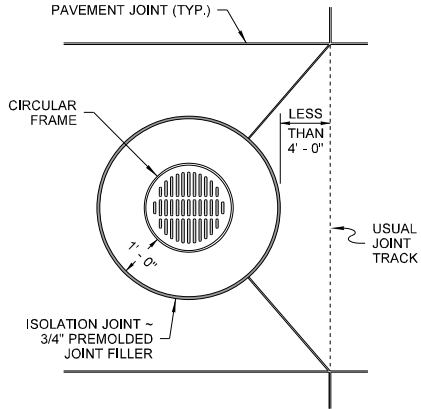


NOTE
ALL CONDITIONS ARE SHOWN IN PLAN VIEW.



NOTE: THIS PLAN IS NOT A LEGAL ENGINEERING DOCUMENT. IT IS THE PROPERTY OF THE STATE OF WASHINGTON. IT IS TO BE USED ONLY FOR THE PROJECT AND LOCATION SHOWN. IT IS NOT TO BE REPRODUCED OR COPIED IN ANY MANNER WITHOUT THE WRITTEN PERMISSION OF THE WASHINGTON STATE DEPARTMENT OF TRANSPORTATION. A COPY MAY BE OBTAINED UPON REQUEST.

**PCC PAVEMENT
ISOLATION JOINTS
STANDARD PLAN A-40.15-00**

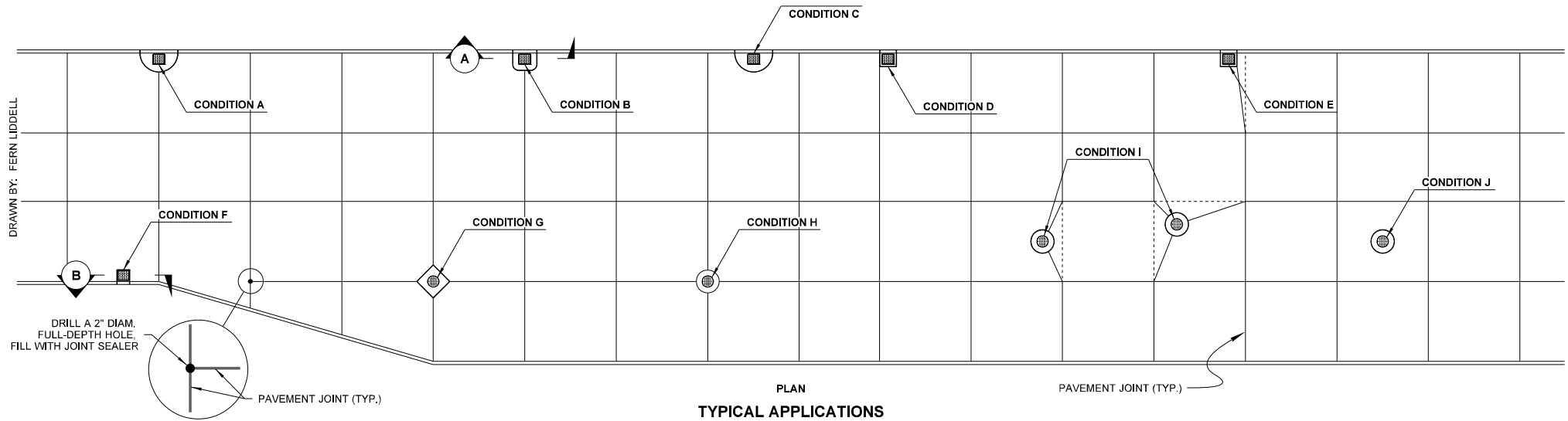
SHEET 1 OF 2 SHEETS

APPROVED FOR PUBLICATION

Pasco Bakotich III 08-11-09

STATE DESIGN ENGINEER DATE
Washington State Department of Transportation

DRAWN BY: FERN LIDDELL

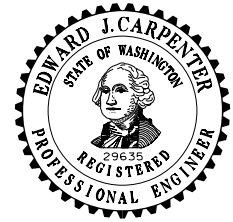
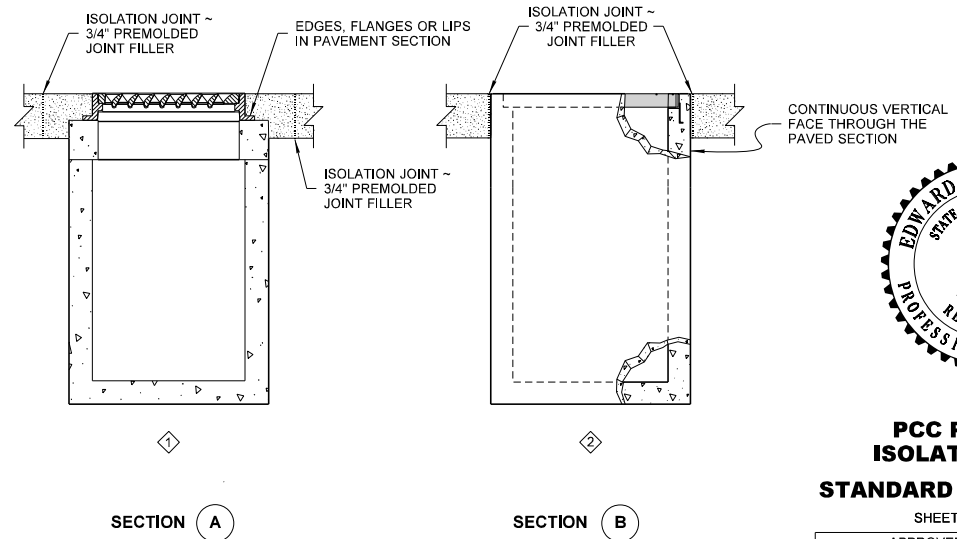


T - JOINT DETAIL

PLAN
TYPICAL APPLICATIONS

TYPICAL ISOLATION JOINT GUIDELINES				
CONDITION	FEATURE	EDGES, FLANGES OR LIPS IN THE PAVEMENT SECTION	CONTINUOUS VERTICAL FACE THROUGH THE PAVEMENT SECTION	DISTANCE FROM NEAREST TRANSVERSE JOINT
A	CATCH BASIN OR COMBINATION GRATE	USE	---	---
B	CATCH BASIN OR COMBINATION GRATE	USE	---	---
C	CATCH BASIN OR COMBINATION GRATE	USE	---	> 4 FT FROM JOINT
D	GRATE INLET, CATCH BASIN OR CONCRETE INLET *	---	USE	< 4 FT FROM JOINT
E	GRATE INLET, CATCH BASIN OR CONCRETE INLET *	---	USE	< 4 FT FROM JOINT
F	GRATE INLET, CATCH BASIN OR CONCRETE INLET *	---	USE	> 4 FT FROM JOINT
G	MANHOLE OR CATCH BASIN TYPE 2	USE	---	---
H	MANHOLE OR CATCH BASIN TYPE 2	USE	---	---
I	MANHOLE OR CATCH BASIN TYPE 2	USE	---	< 4 FT FROM JOINT
J	MANHOLE OR CATCH BASIN TYPE 2	USE	---	> 4 FT FROM JOINT

* WITH RECTANGULAR GRATE CAST INTO ADJUSTMENT SECTION.



NOTE: THIS PLAN IS NOT A LEGAL ENGINEERING DOCUMENT. THE ORIGINAL, SIGNED BY THE ENGINEER, MUST BE SUBMITTED WITH THE PROJECT. A COPY MAY BE OBTAINED UPON REQUEST.

**PCC PAVEMENT
ISOLATION JOINTS
STANDARD PLAN A-40.15-00**

SHEET 2 OF 2 SHEETS

APPROVED FOR PUBLICATION

Pasco Bakotich III 08-11-09

STATE DESIGN ENGINEER DATE
Washington State Department of Transportation

SUPPLEMENTAL TO STANDARD PLAN

A-40.15-00

Modify sheets 1 and 2 of the Standard Plan as follows:

Notes:

1. Delete reference to premolded joint filler in the Standard Plan. Where joints with premolded joint filler are shown on the Standard Plan, construct a contraction joint, except, when the isolation area is constructed as a separate pour, construct a construction joint.