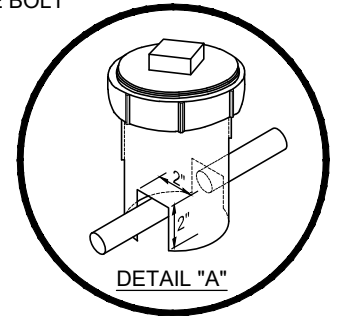


NOTES:

1. CLEARANCES:
MIN. 5' FROM EDGE OF DRIVEWAY - METERS SHALL BE PLACED OUTSIDE OF DRIVEWAY
MIN. 10' FROM TREES
MIN. 5' FROM OTHER UTILITIES, EXCEPT SEWER AT 10' MIN.
MIN. DEPTH AT RIGHT OF WAY IS 18"
2. COMPRESSION FITTINGS SHALL BE U.S. BRASS - NO GALVANIZED OR PLASTIC.
3. THE SERVICE LINE SHALL BE CONTINUOUS WITHOUT SPLICES, JOINTS OR COUPLINGS OF ANY KIND BETWEEN THE CORPORATION STOP AND CURB STOP VALVE UNLESS APPROVED BY THE CITY.
4. NO DIRECT TAPS SHALL BE ALLOWED.
5. METER LOCATION SHALL BE 12" MIN. FROM PROPERTY LINE. LOCATION TO BE CONFIRMED BY CITY.
6. SADDLES SHALL BE DUCTILE IRON, STAINLESS STEEL, OR BAND-TYPE WITH I.P. STANDARD TAPPING.
7. BALL CORPORATION STOPS FOR USE WITH SADDLES SHALL BE OF BRASS WITH INLET I.P. STANDARD THREAD AND COMPRESSION OUTLET COMPATIBLE WITH CONNECTION PIPING, WITH NO ADAPTERS.
8. SERVICE TUBING SHALL BE 1" HDPE (200 PSI RATING, CTS, BLUE) OR 1" TYPE K COPPER TUBING.
9. COMPRESSION COUPLING FOR USE IN CONNECTING PLAIN END WATER SERVICE TUBING SHALL BE APPLICABLE FOR THE TYPE OF TUBING BEING COUPLED. COMPRESSION COUPLINGS SHALL HAVE ARMORED GASKETS WHEN DIS-SIMILAR METAL TUBING IS JOINED.
10. CORPORATION STOPS AND COUPLINGS SHALL BE OF THE FOLLOWING MANUFACTURER BRANDS AND BE COMPRESSION DESIGN:
MUELLER
McDONALD
FORD
11. 3/4" AND 1" WATER METERS SHALL BE PROVIDED BY THE CITY.
12. METER SETTERS SHALL BE FORD70 SERIES VBB74-12W-11-44-NL OR APPROVED EQUAL. INSTALLATION OF 3/4" METERS REQUIRES ADAPTORS. ADAPTORS SHALL BE BRASS, FORD A24-NL OR APPROVED EQUAL.
13. METER BOXES SHALL BE ARMORCAST A6001419-KO WITH A A6001420DW-H7 COVER AND 00361020 CAST IRON DROP IN LID, OR APPROVED EQUAL.
14. ALL FITTINGS CONNECTING TO METER SETTER SHALL BE GASKETED (FIBER FOR DUAL PURPOSE NUTS, RUBBER FOR BALL VALVE ANGLE STOPS).
15. ADJACENT METER BOXES SHALL BE LOCATED SUCH THAT THERE IS A MINIMUM OF 16" SPACE BETWEEN OUTSIDE WALLS.



N.T.S.



3/4" AND 1" WATER SERVICE CONNECTION

CITY OF KELSO
DEPARTMENT OF
COMMUNITY DEVELOPMENT
& ENGINEERING

CITY ENGINEER APPROVAL: Michael Kardas, P.E.

x *[Signature]*

STANDARD PLAN NO.

KW-010-21

DATE:

MAY 2021