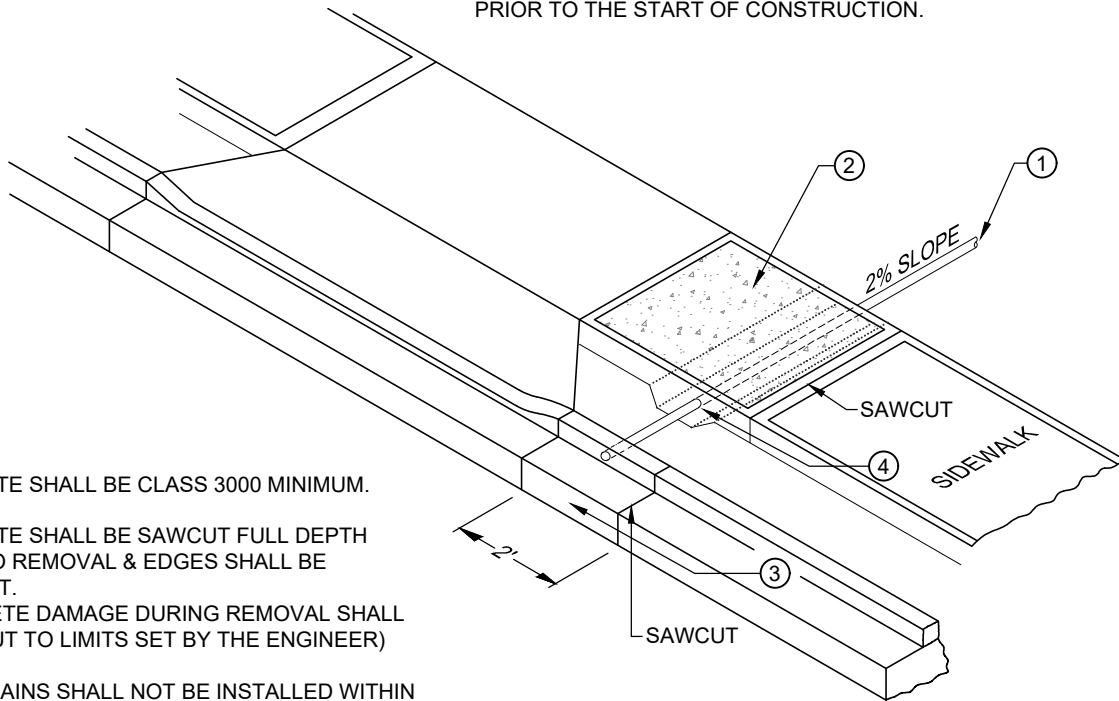


OBTAIN A PERMIT FROM THE OFFICE OF THE CITY ENGINEER PRIOR TO CONSTRUCTION IN THE CITY RIGHT-OF-WAY. THE ENGINEERS OFFICE MUST BE NOTIFIED PRIOR TO THE START OF CONSTRUCTION.



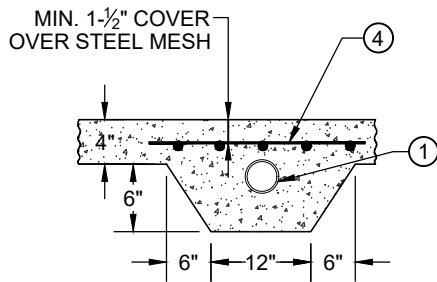
CONCRETE SHALL BE CLASS 3000 MINIMUM.

CONCRETE SHALL BE SAWCUT FULL DEPTH PRIOR TO REMOVAL & EDGES SHALL BE STRAIGHT.
(CONCRETE DAMAGE DURING REMOVAL SHALL BE RE-CUT TO LIMITS SET BY THE ENGINEER)

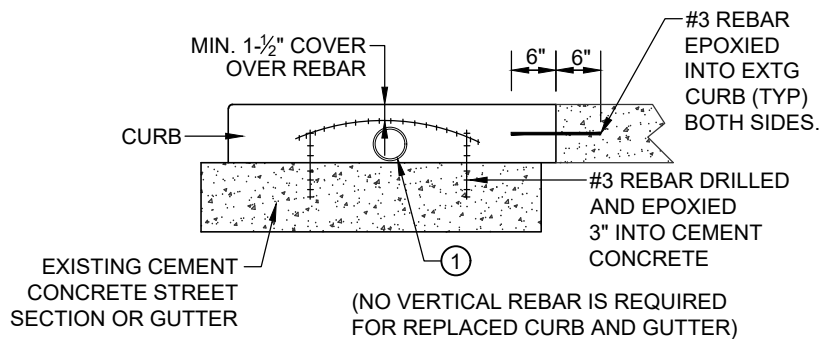
CURB DRAINS SHALL NOT BE INSTALLED WITHIN THE DRIVEWAY WING AREA.

- ① 3" DIA. P.V.C. OR ABS PIPE FOR RESIDENTIAL APPLICATIONS
3" DIA. DUCTILE IRON PIPE FOR COMMERCIAL & INDUSTRIAL APPLICATIONS
- ② SIDEWALK SHALL BE SAWCUT AND REMOVED TO EXISTING SCORE MARKS (FULL PANEL) OR AS DIRECTED BY THE ENGINEER. BROOM FINISH & MATCH EXISTING EDGE TREATMENT.
- ③ SAW & REMOVE 2' LENGTH OF CURB & GUTTER (FOR CONCRETE STREET REMOVE CURB ONLY). INSTALL REINFORCING STEEL & DRAIN AS SHOWN BELOW. DRAIN PIPE SHALL BE CUT FLUSH WITH FACE OF CURB. CURB MAY BE CORE DRILLED IN LIEU OF REMOVAL. GROUT ALL VOIDS.
- ④ STEEL MESH: 6" X 6" X 10 GAUGE

SIDEWALK SECTION

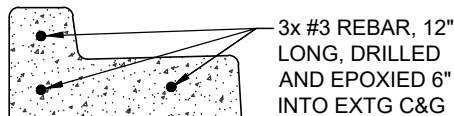


CURB SECTION & CONCRETE STREET



CURB AND GUTTER REPLACEMENT: REBAR LOCATION

USE #3 REBAR TO TIE NEW CURB & GUTTER TO EXTG AS SHOWN



N.T.S.



CITY OF KELSO
DEPARTMENT OF
COMMUNITY DEVELOPMENT
& ENGINEERING

CUT-IN CURB DRAIN

CITY ENGINEER APPROVAL: Michael Kardas, P.E.

x *[Signature]*

STANDARD PLAN NO.

KST-060-21

DATE:

MAY 2021