



SOUTH KELSO RAILROAD CROSSING PROJECT

Project Need

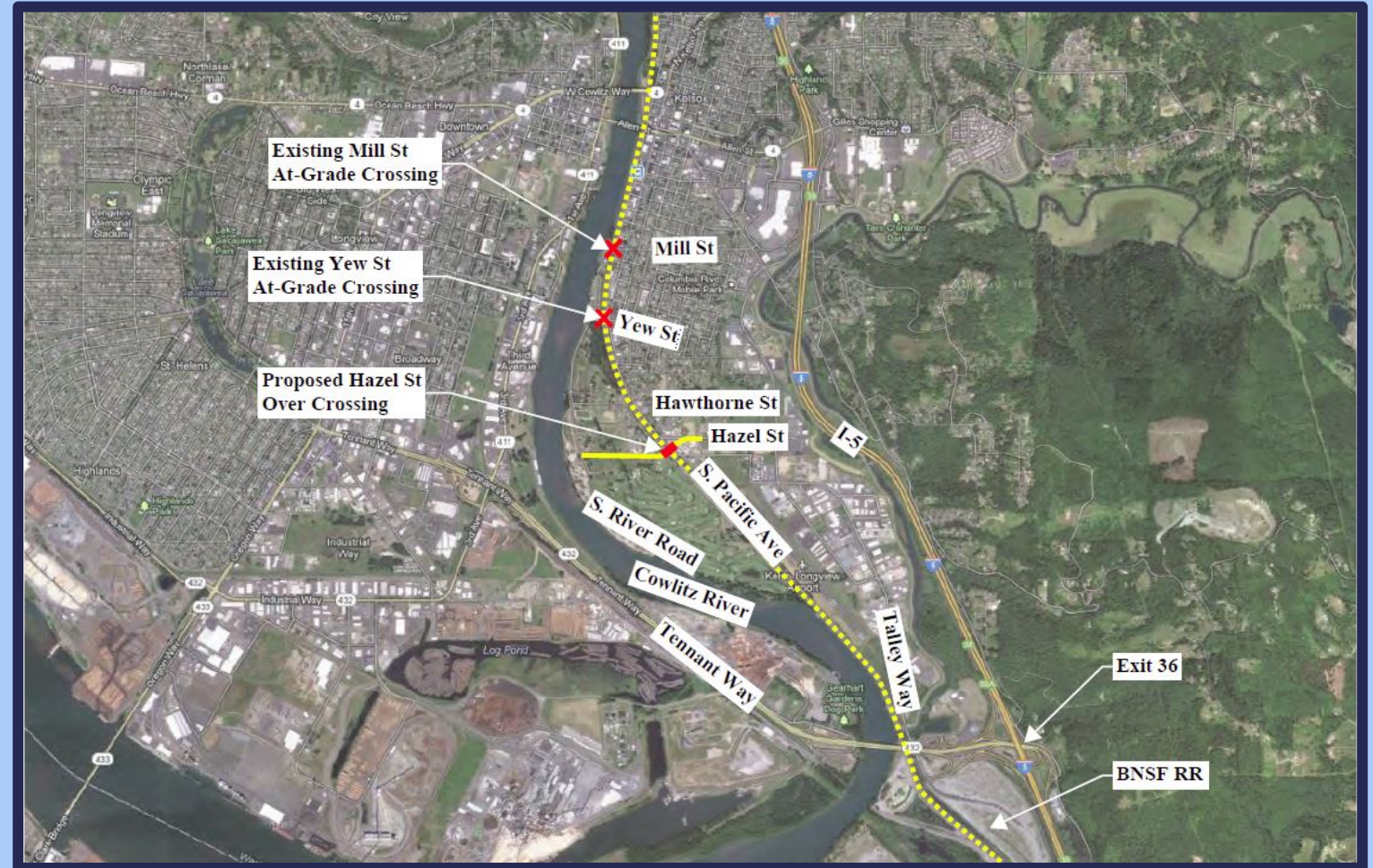
- Two existing at-grade railroad crossings
 - *Mill Street*
 - *Yew Street*
- Issues
 - *Delays*
 - *Safety*
 - *Conflicts between travel modes*
 - *Access between east and west*



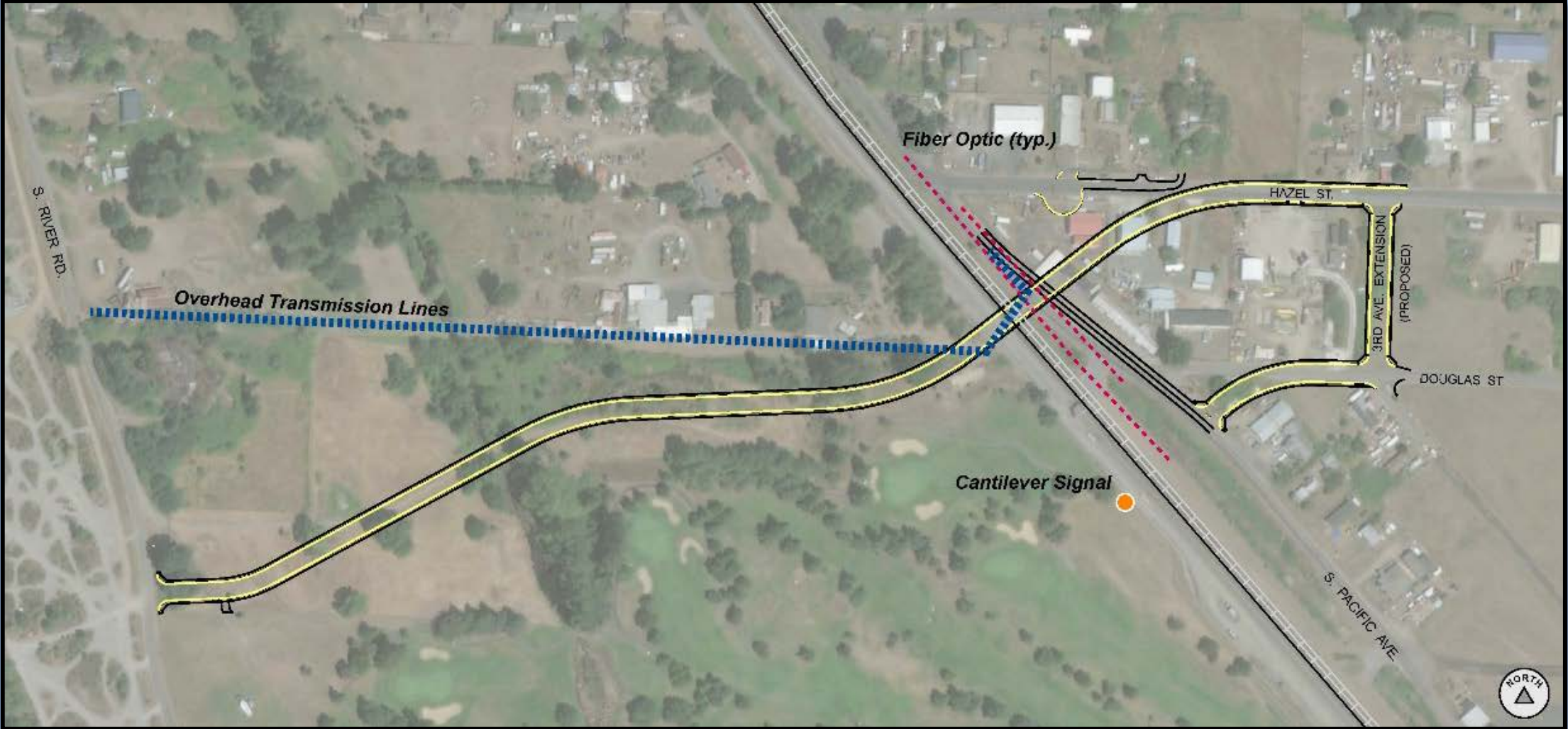
Project study area

2013 City of Kelso Railroad Crossing Study

- Evaluate current conditions
- Identify options for a new crossing
- Four options considered
 - *Hazel Street and Hawthorne Street*
 - *Overcrossing and undercrossing*

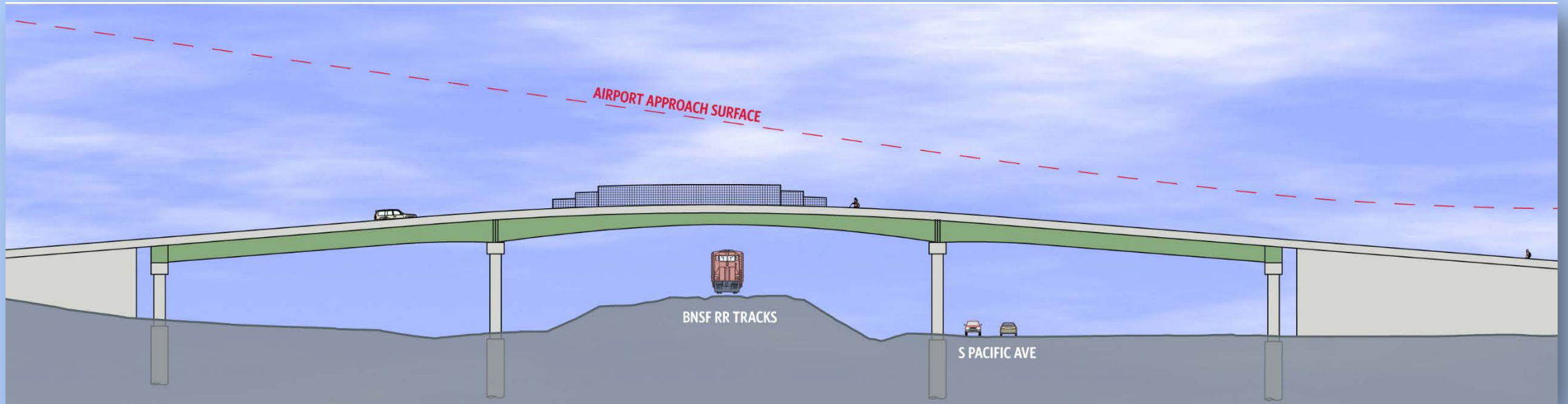


Recommended Concept



This is a conceptual plan that may continue to change based on technical analysis and community input.

Bridge Profile (simulation)



This is a profile concept conceptual that may change based on further design and community input.

Timeline

2017-2019

Preliminary Engineering and Environmental Clearance

2019-2021

Final Design and Right of Way Acquisition

2021-2023

Construction

Discussion

- Potential Impacts
- Future opportunities for involvement
- Questions & concerns