

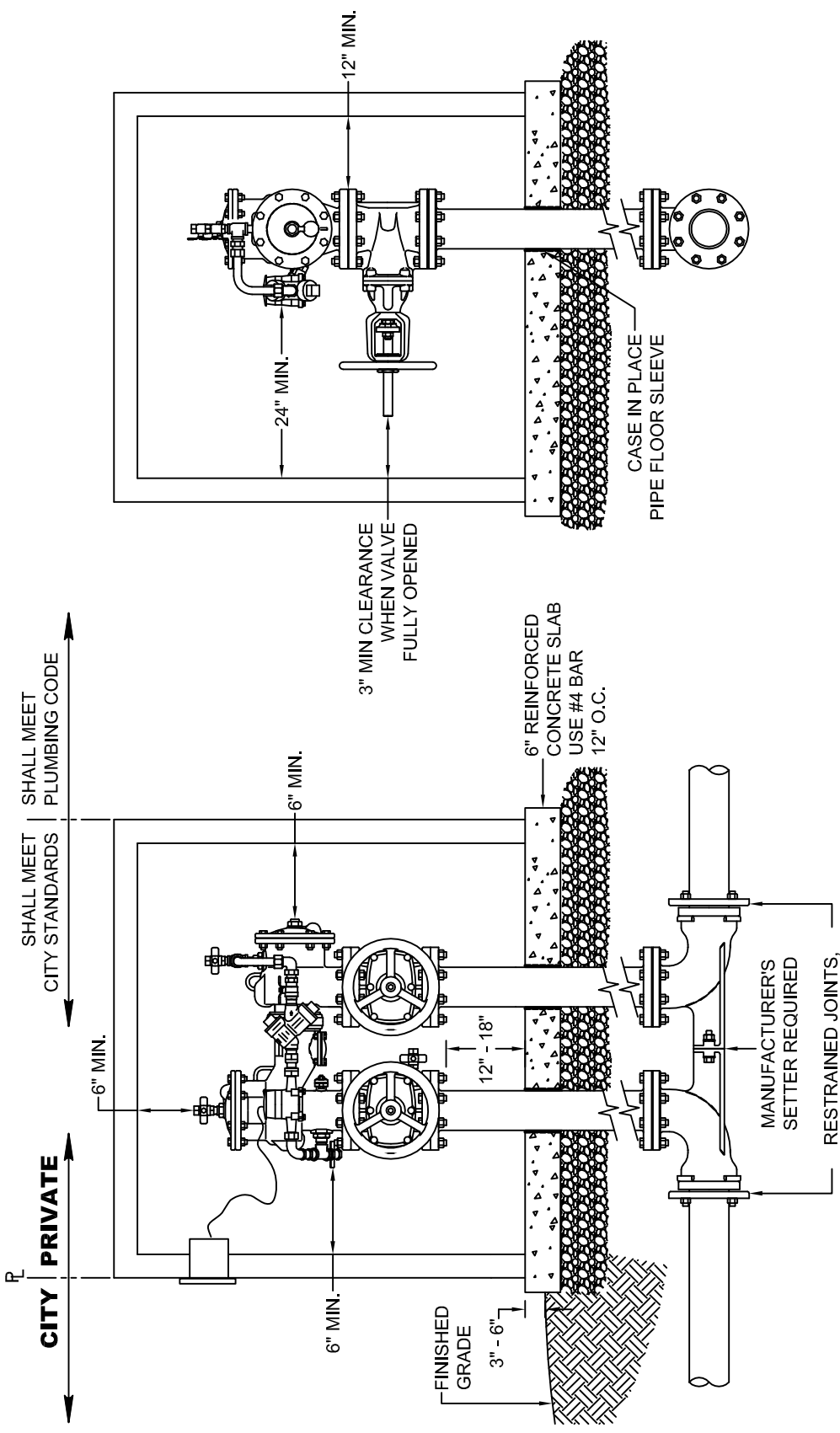
DOUBLE CHECK DETECTOR ASSEMBLY, N-PATTERN

STANDARD PLAN:
W - 380

DATE: **FEB. 2008**

CITY ENGINEER APPROVAL:
Longview: **C.B.**

Kelso: **S.Z.**



END ELEVATION

SIDE ELEVATION

NOTES:

1. REFER TO CITY STANDARD DETAIL W-430 FOR INSTALLATION REQUIREMENTS THAT APPLY TO ALL BACKFLOW PREVENTION ASSEMBLIES.
2. ASSEMBLY SHALL BE INSTALLED ABOVE GROUND IN A HEATED AND/OR INSULATED ENCLOSURE CAPABLE OF PROVIDING YEAR-ROUND FREEZE PROTECTION, SIZED TO MEET THE CLEARANCE REQUIREMENTS SHOWN IN THE DETAIL.
3. DCDA GATE VALVES SHALL HAVE SUPERVISED TAMPER SWITCHES IF REQUIRED BY FIRE MARSHALL.
4. WATER METER SHALL INCLUDE A TOUCH READ PIT MODULE INSTALLED ON THE STREET SIDE OF THE ENCLOSURE.
5. VERTICAL UPRIGHTS SHALL BE FLANGED SPOOLS OR BE RESTRAINED JOINT WITH STAINLESS STEEL RODS.
6. SLAB SHALL EXTEND 12" LARGER THAN ENCLOSURE FOOTPRINT, ALL THE WAY AROUND.