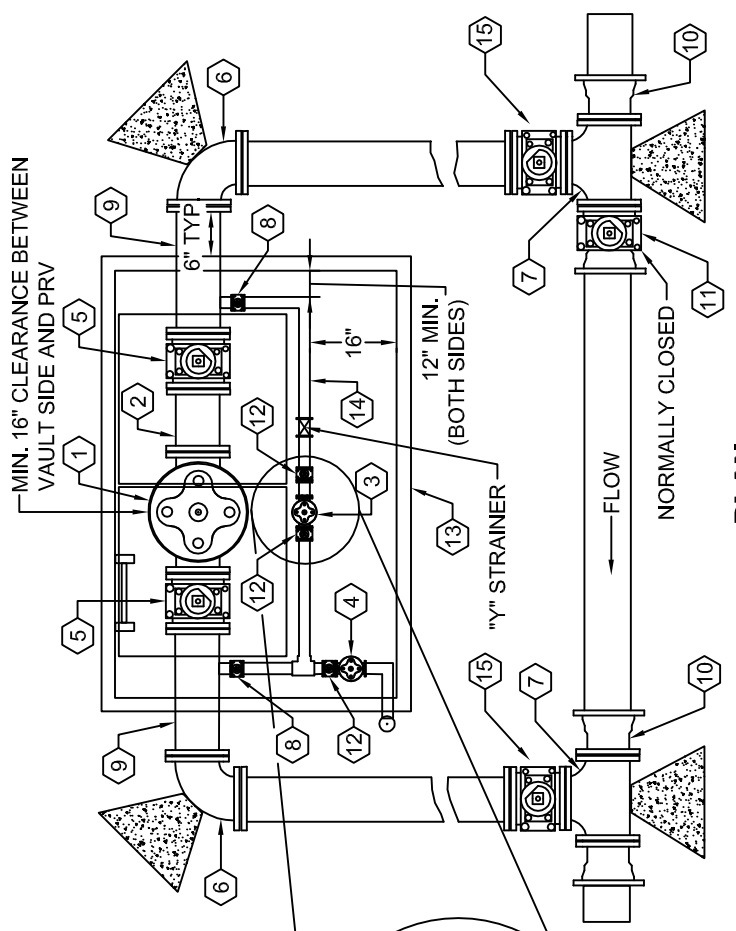


**SECTION**



**PLAN**

- 1 PRESSURE REDUCING VALVE 90-01 WITH STEM INDICATOR (CLA-VALVE OR EQUAL) (FIRE AND/OR PEAK DEMAND).
- 2 "Y" STRAINER FLG x MJ
- 3 LOW FLOW PRESSURE REDUCING VALVE 90-01 WITH STEM INDICATOR (CLA-VALVE OR EQUAL) (DOMESTIC AND/OR PEAK DEMAND).
- 4 PRESSURE RELIEF VALVE 50-01 & DISCHARGE PIPE SHALL BE SIZED FOR TOTAL FLOW.
- 5 RSWG V FLG x MJ
- 6 FLG x MJ 90d BEND
- 7 FLG x FLG TEE
- 8 RESILIENT SEAT WEDGE GATE VALVE
- 9 FLG x MJ D.I. SPOOL
- 10 FLG x MJ ADAPTOR. USE ROMAC FLG COUPLING ADAPTOR FOR INSTALLING IN EXISTING PIPE.
- 11 MJ x FLG RSWG V (ZONE VALVE CLOSED POSITION) FLG TO UPSTREAM TEE ONLY.
- 12 RESILIENT SEAT WEDGE GATE VALVE
- 13 VAULT (UTILITY VAULT OR EQUAL)
- 14 ALUMINUM HYDRAULIC LIFT ASSIST LOCKING HATCH LW HDD-1 LEAK PROOF GASKETED. (MIN 36" x 60")
- 15 FLG x MJ VALVE

**NOTES:**

- 1. ALL PENETRATIONS OF VAULT SHALL BE LINK SEAL OR EQUAL.
- 2. PRV HAS TO BE SIZED TO RELIEVE TOTAL CAPACITY OF STATION IN ACCORDANCE WITH MANUFACTURERS RECOMMENDATION.
- 3. ALL THRUST BLOCKS TO BE CLASS 4000 CONCRETE.
- 4. HATCH TO DRAIN OUTSIDE VAULT.
- 5. ALL MJ FITTINGS TO BE RESTAINED.
- 6. LARGE VALVE TO HANDLE FIRE FLOW, SMALL VALVE TO HANDLE DOMESTIC MAX DA.
- 7. VAULT SHOP DRAWING REQUIRED PRIOR TO ORDERING MATERIALS.



**4" - 12" TYPICAL PRESSURE REGULATION STATION**

STANDARD PLAN:  
**W - 140**

DATE: **FEB. 2008**

CITY ENGINEER APPROVAL:  
Longview: **C.B.**

Kelso: **S.Z.**