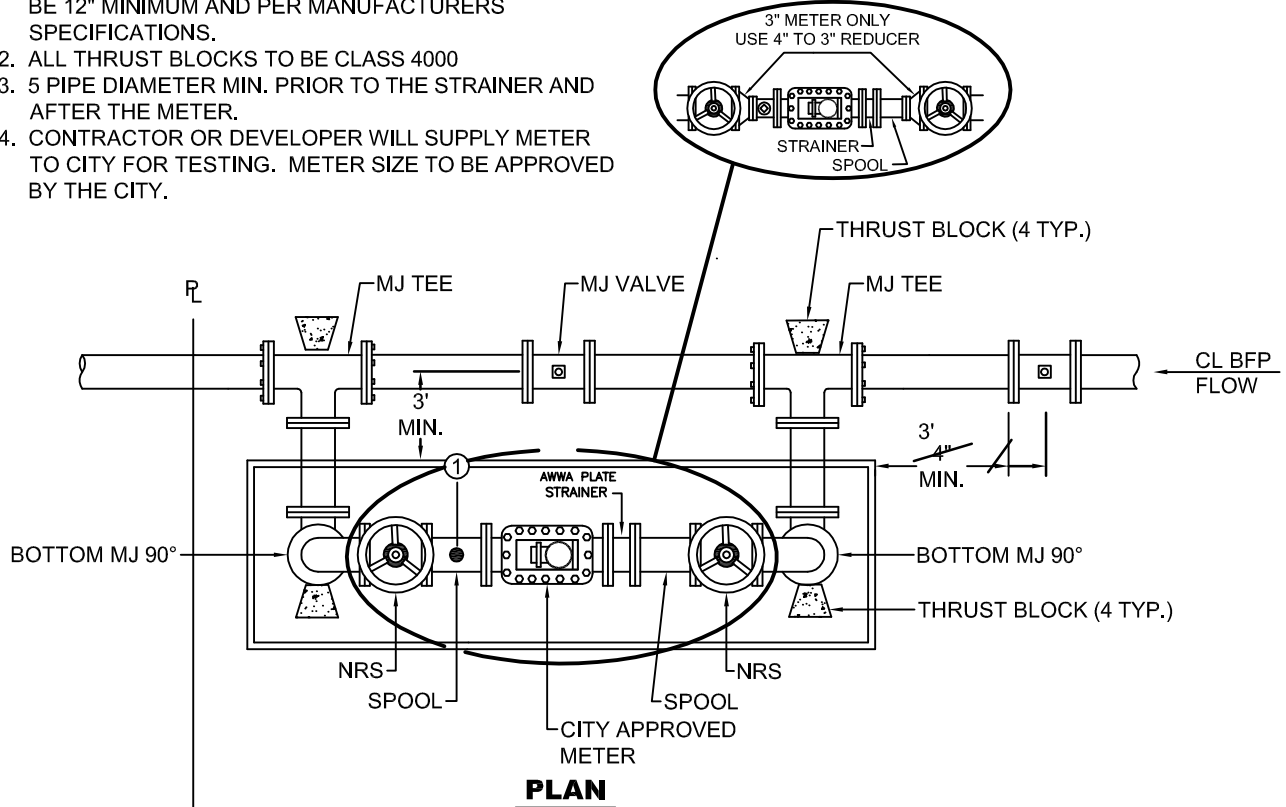


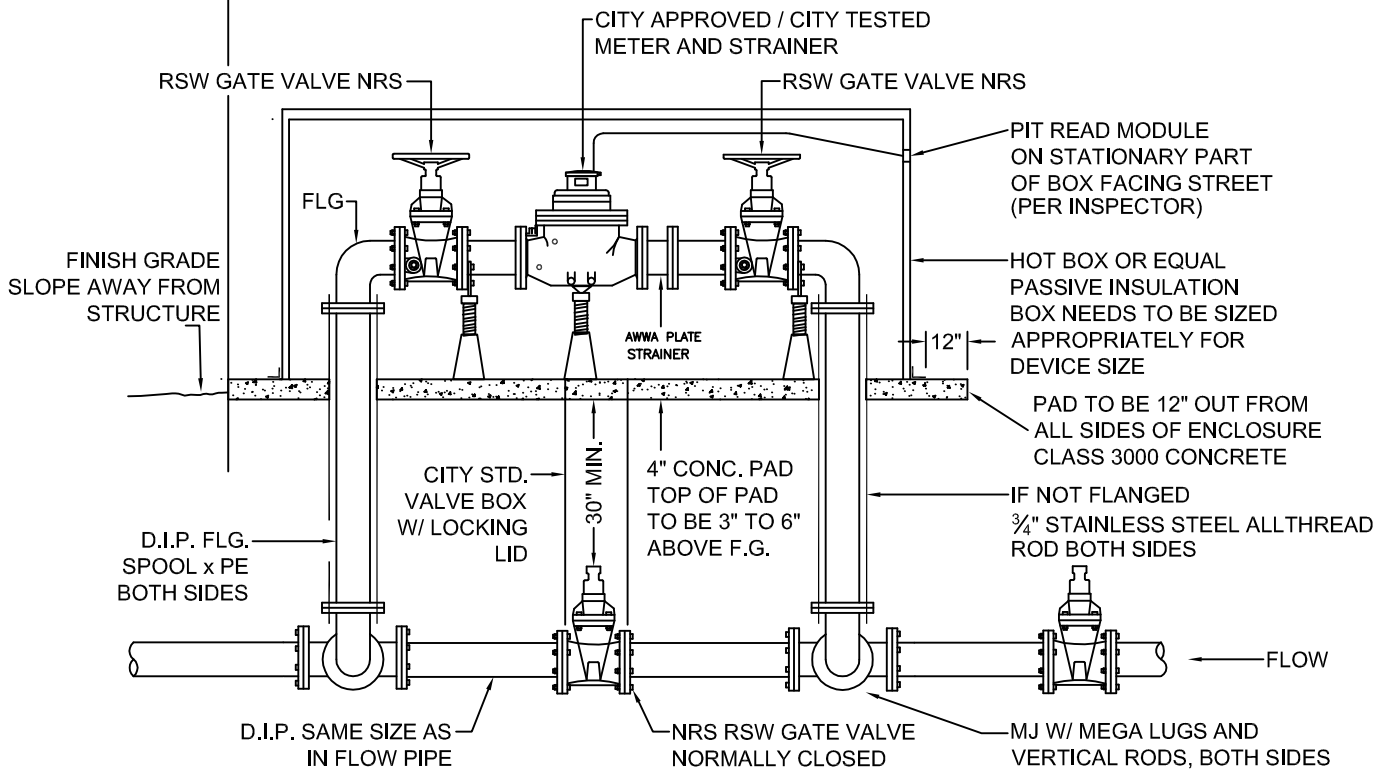
NOTES:

1. INSULATED ENCLOSURES INTERIOR CLEARANCE TO BE 12" MINIMUM AND PER MANUFACTURERS SPECIFICATIONS.
2. ALL THRUST BLOCKS TO BE CLASS 4000
3. 5 PIPE DIAMETER MIN. PRIOR TO THE STRAINER AND AFTER THE METER.
4. CONTRACTOR OR DEVELOPER WILL SUPPLY METER TO CITY FOR TESTING. METER SIZE TO BE APPROVED BY THE CITY.

① 2" TEST PLUG, 4" BRASS NIPPLE, WITH 2" BALL VALVE AND PLUG WITH ROMAC SST SADDLE.



PLAN



ELEVATION



3" AND LARGER, ABOVE GROUND, DOMESTIC METER

STANDARD PLAN: W - 050	CITY ENGINEER APPROVAL:
DATE: FEB. 2008	Longview: C.B.
	Kelso: S.Z.