

MONUMENT CASE AND COVER

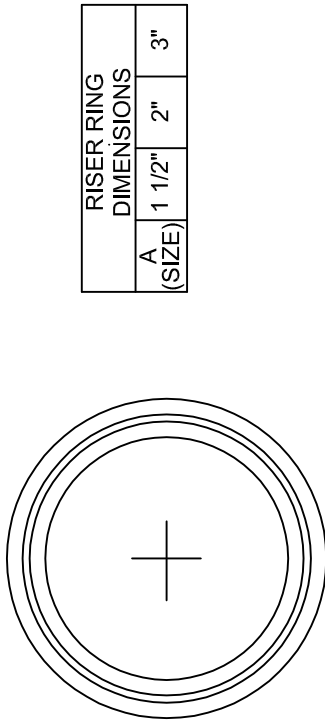
STANDARD PLAN:
ST - 180

CITY ENGINEER APPROVAL:

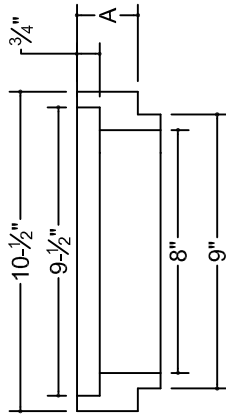
DATE: **FEB. 2008**

Longview: **C.B.**

Kelso: **S.Z.**



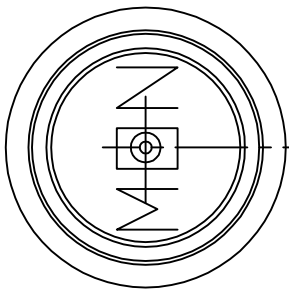
PLAN
RISER RING



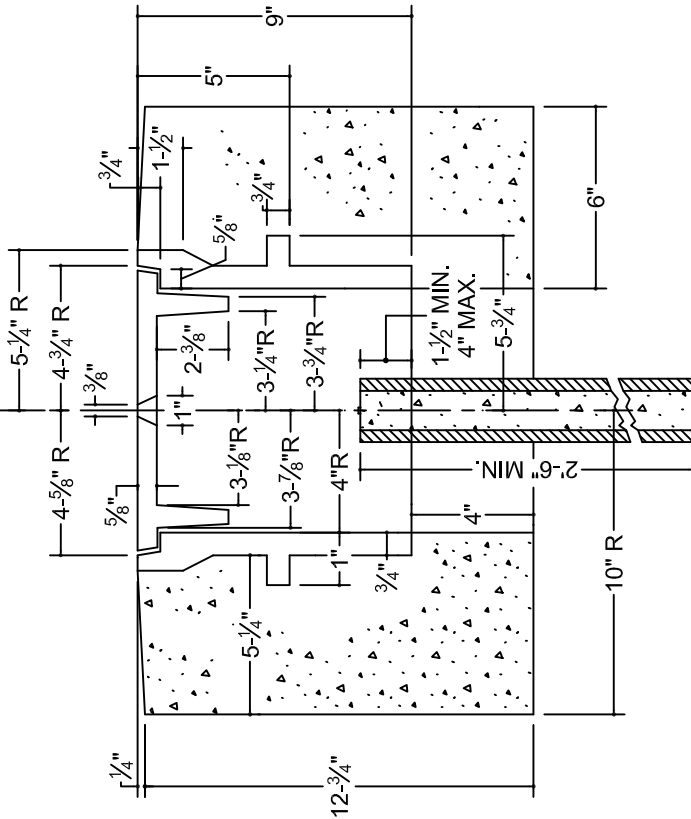
SECTION
RISER RING

CONCRETE SHALL BE CL 4000 COMMERCIAL MIX & SHALL BE PROTECTED UNTIL 3500 PSI IS OBTAINED.

APPROXIMATE WEIGHTS	
CASE	60 LB
COVER	19 LB
TOTAL	79 LB



MONUMENT COVER



ASSEMBLY SECTION