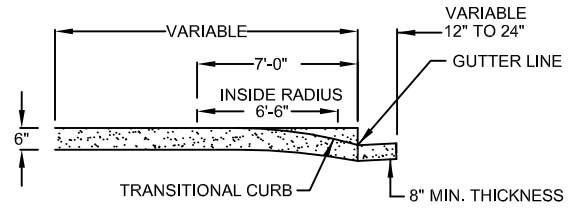
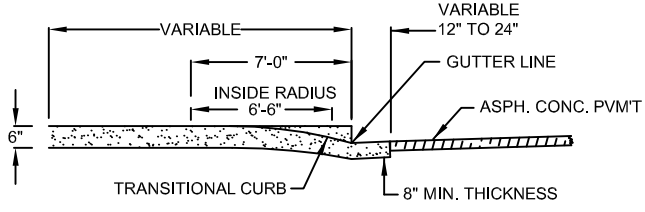
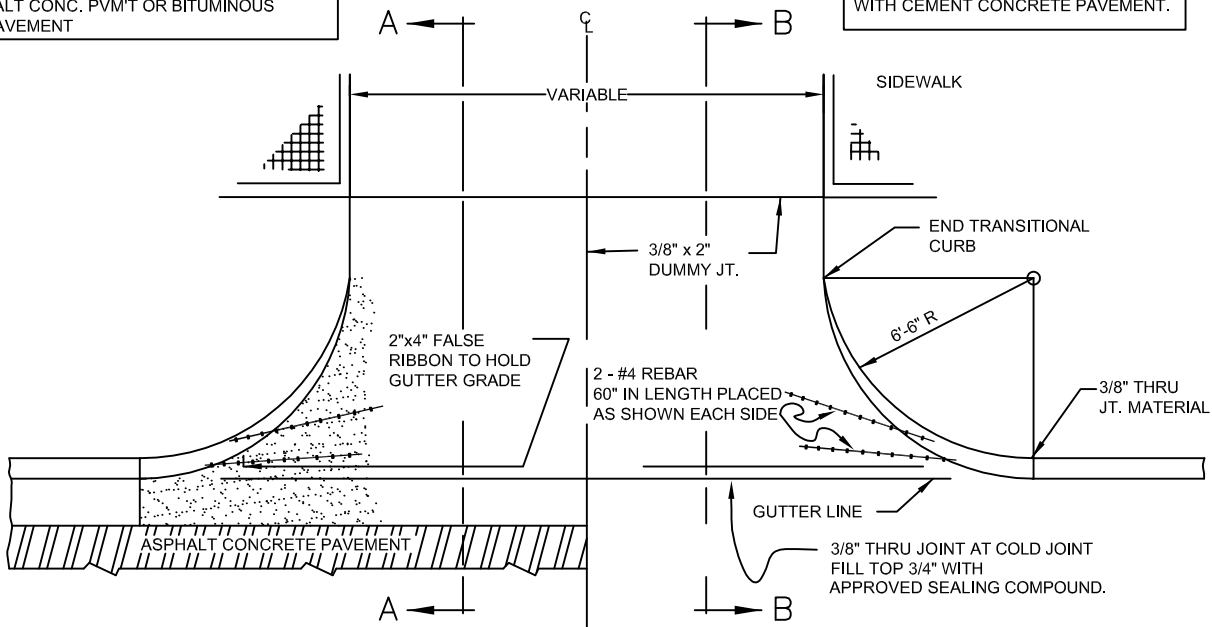


ALLEY RETURN SHALL BE PLACED BEFORE ASPHALT CONC. PVM/T OR BITUMINOUS MIX PAVEMENT

THIS ALLEY RETURN TO BE USED WITH CEMENT CONCRETE PAVEMENT.



**NOTES:**

1. WHERE DISTANCE FROM FACE OF CURB TO FRONT OF WALK EXCEEDS 16', A 2" TRANSVERSE DUMMY JOINT SHALL BE PLACED AT RADIUS POINT, OR AS DIRECTED BY THE ENGINEER.
2. PLYWOOD WELL STAKED MAY BE USED FOR RADIUS FORMS.
3. ALL JOINTS TO RECEIVE APPROVED JOINT MATERIAL.
4. REINFORCED STEEL SHALL BE INCIDENTAL TO THE COST OF CEMENT CONCRETE ALLEY RETURNS.
5. JOINTS: ALL JOINTS SHALL BE CLEANED & EDGED WITH A 1/4" EDGER. LONGITUDINAL JOINTS SHALL BE AS DIRECTED BY THE ENGINEER.
6. MATERIAL: ALL MATERIALS SHALL MEET THE REQUIREMENTS OF THE STD. SPECIFICATIONS & THESE SPECIAL PROVISIONS.
7. PROCEDURES: FURTHER REQUIREMENTS FOR FORMS, FORM SETTING, PLACING, FINISHING, AND CURING CONCRETE SHALL BE AS OUTLINED IN STD. SPECIFICATIONS & SPECIAL PROVISIONS.
8. A MINIMUM OF 8" OF CSTC SHALL BE PLACED & COMPACTED BELOW CONCRETE APPROACH.



**CEMENT CONCRETE ALLEY APPROACH**

STANDARD PLAN:  
**ST - 170**  
DATE: **FEB. 2008**

CITY ENGINEER APPROVAL:  
Longview: **C.B.**  
Kelso: **S.Z.**