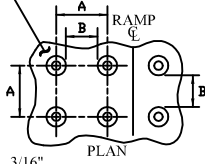
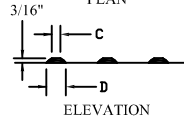


DETECTABLE WARNING PATTERN AREA SHALL BE YELLOW, IN COMPLIANCE WITH STD. SPEC. 8-14.3(3)



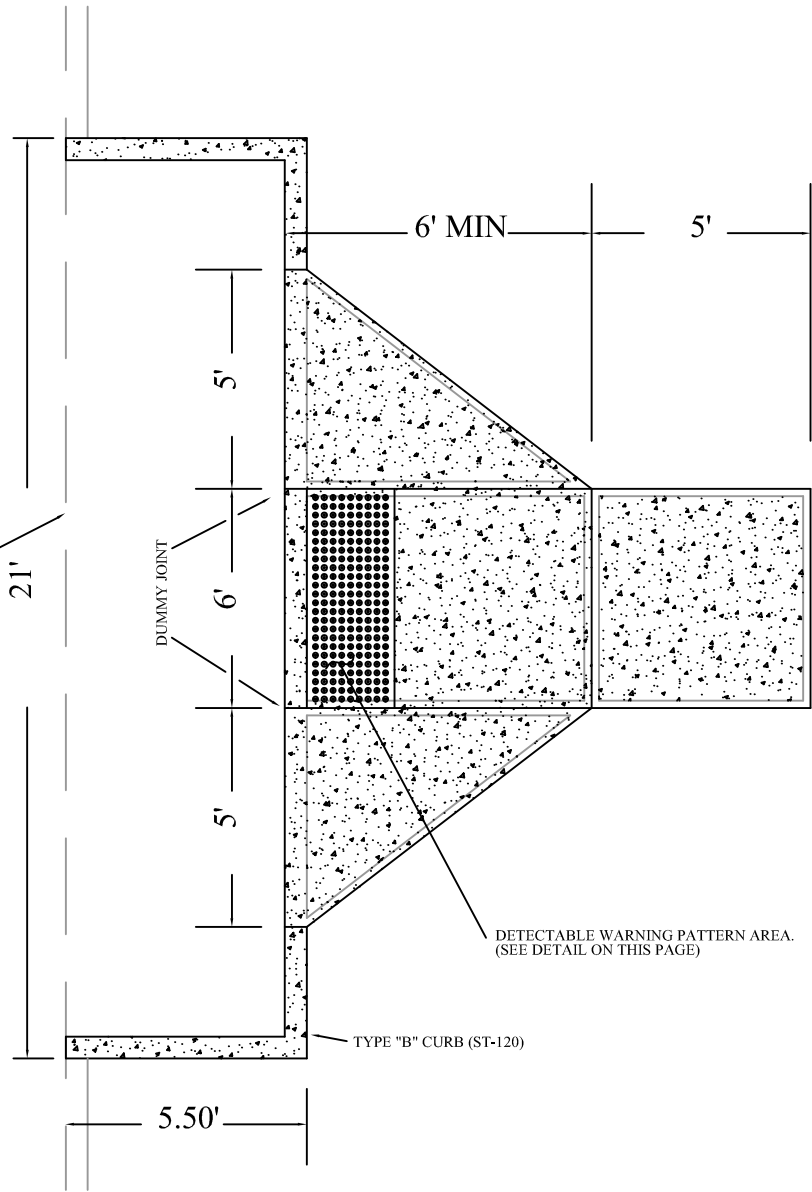
	MIN.	MAX.
A	1-5/8"	2-3/8"
B	5/8"	1-1/2"
C	7/16"	3/4"
D	7/8"	1-7/16"



TRUNCATED DOMES (SEE NOTE 2)  
DETECTABLE WARNING PATTERN DETAIL

CL STREET

SAW ALONG FACE OF CURB  
INSTALL 1/2" x 10" THRU JOINT

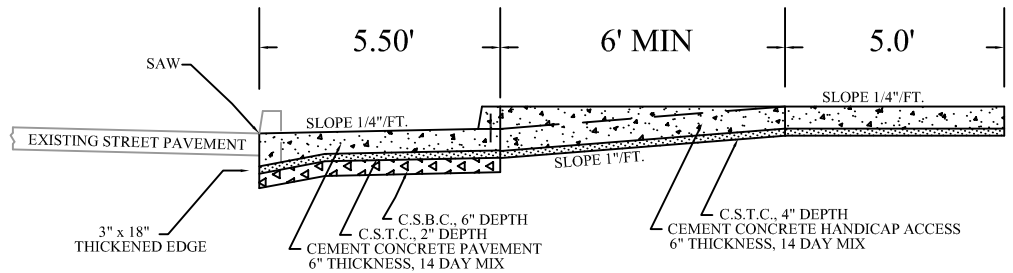


DETECTABLE WARNING PATTERN AREA.  
(SEE DETAIL ON THIS PAGE)

TYPE "B" CURB (ST-120)

NOTES

1. AVOID PLACING DRAINAGE STRUCTURES, JUNCTION BOXES OR OTHER OBSTRUCTIONS IN FRONT OF RAMP ACCESS AREAS.
2. DETECTABLE WARNING PATTERNS MAY BE CREATED BY ANY METHOD (EXCEPT STAMPING) THAT WILL ACHIEVE THE TRUNCATED DOME DIMENSIONS AND SPACING SHOWN.
3. CURB AND GUTTER SHOWN; SEE THE CONTRACT PLANS FOR THE CURB DESIGN SPECIFIED. SEE STD. PLAN ST-490 & ST-120 FOR CURB DETAILS.
4. RAMP SLOPES SHALL NOT BE STEEPER THAN 12H:1V.



**DISABLED ACCESS**

STANDARD PLAN:  
**ST - 130**

CITY ENGINEER APPROVAL:

DATE: **FEB. 2008**

Longview: **C.B.**

Kelso: **S.Z.**