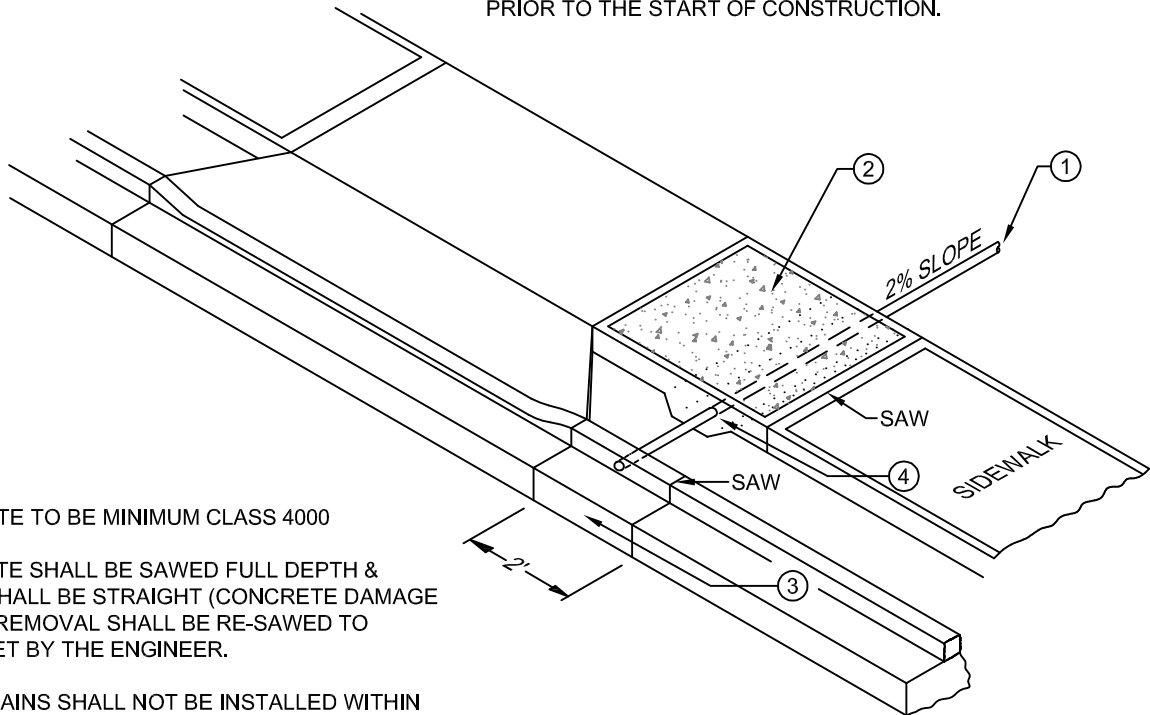


A PERMIT MUST BE OBTAINED FROM THE OFFICE OF THE CITY ENGINEER PRIOR TO CONSTRUCTION IN THE CITY RIGHT-OF-WAY. THE ENGINEERS OFFICE MUST BE NOTIFIED PRIOR TO THE START OF CONSTRUCTION.



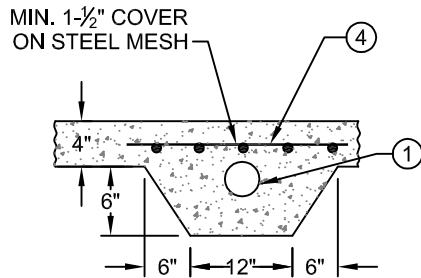
CONCRETE TO BE MINIMUM CLASS 4000

CONCRETE SHALL BE SAWED FULL DEPTH & EDGES SHALL BE STRAIGHT (CONCRETE DAMAGE DURING REMOVAL SHALL BE RE-SAWED TO LIMITS SET BY THE ENGINEER.

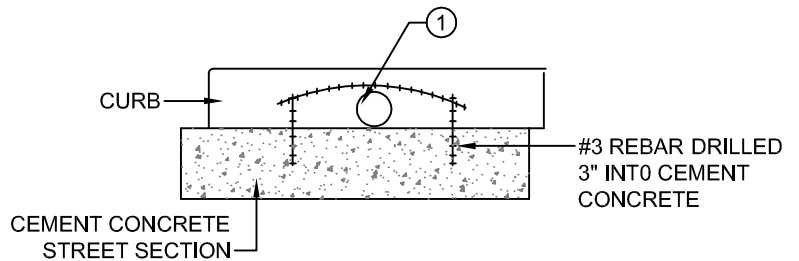
CURB DRAINS SHALL NOT BE INSTALLED WITHIN THE DRIVEWAY WING AREA.

- ① 3" DIA. P.V.C. OR ABS PIPE FOR RESIDENTIAL APPLICATIONS
3" DIA. DUCTILE IRON PIPE FOR COMMERCIAL & INDUSTRIAL APPLICATIONS
- ② SIDEWALK SHALL BE REMOVED TO EXISTING SCORE MARKS (FULL PANEL) OR AS DIRECTED BY THE ENGINEER. BROOM FINISH & MATCH EXISTING EDGE TREATMENT.
- ③ SAW & REMOVE 2' LENGTH OF CURB & GUTTER (FOR CONCRETE STREET REMOVE CURB ONLY). INSTALL RE-INFORCED STEEL & DRAIN AS SHOWN BELOW. DRAIN PIPE TO BE CUT FLUSH WITH FACE OF CURB. CURB MAY BE CORE DRILLED IN LIEU OF REMOVAL-GROUT ALL VOIDS.
- ④ STEEL MESH TO BE 6" X 6" X 10 GAUGE

SIDEWALK SECTION



CURB SECTION & CONCRETE STREET



(CURB & GUTTER REPLACEMENT REQUIRES ONLY THE HORIZONTALLY PLACED RE-BAR)



CURB DRAIN

STANDARD PLAN:
ST - 120

CITY ENGINEER APPROVAL:

Longview: **C.B.**

DATE: **FEB. 2008**

Kelso: **S.Z.**